

THE OFFICIAL MAGAZINE OF THE OCEANOGRAPHY SOCIETY

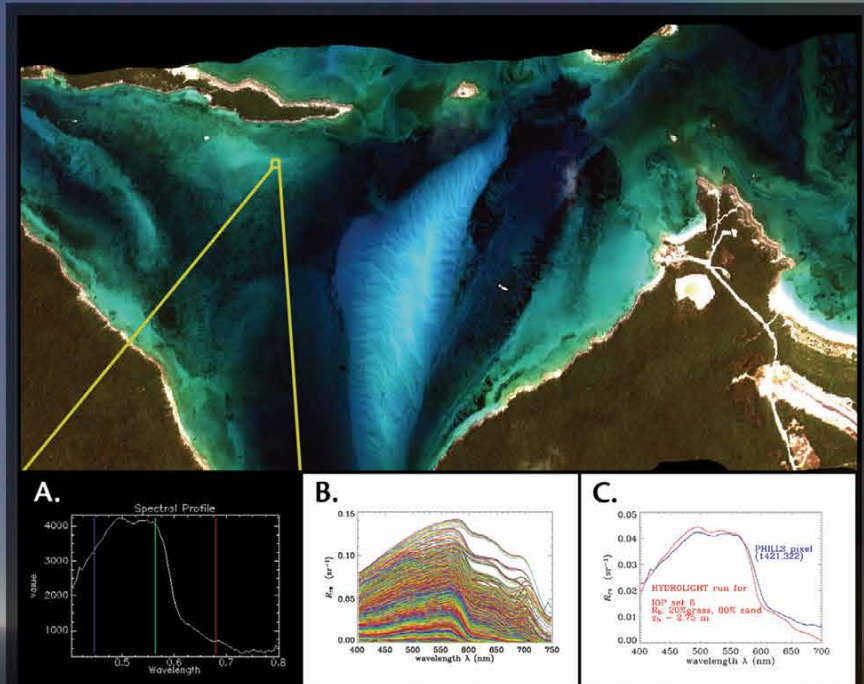
Oceanography

VOL.17, NO.2, JUNE 2004

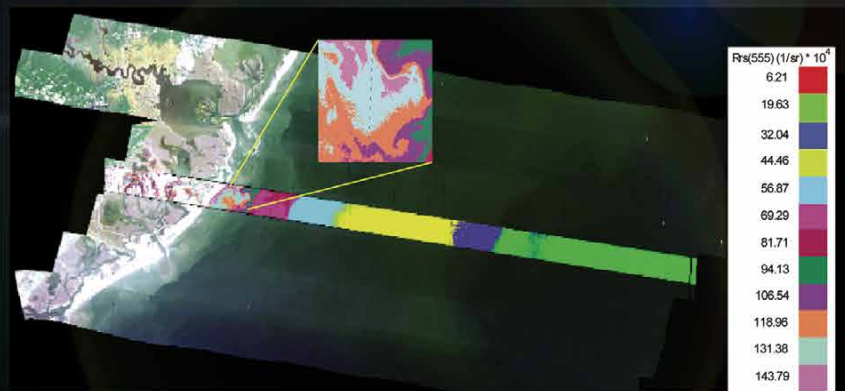
SPECIAL ISSUE

*Coastal Ocean Optics
and Dynamics*





A PHILLS image of Adderly Cut, Lee Stocking Island, Bahamas. Figures outline the look-up-table (LUT) R_{rs} retrieval approach beginning with A) Extraction of the pixel R_{rs}, B) comparison to the spectrum database (n=19,545) and C) retrieval of environmental information resulting from an R_{rs} match; in this case 2.75 meters depth with sparse sea grass on sand.



A false color composite of the 9 m PHILLS 2 data collected on July 31, 2001 at the HyCODE LEO-15 study site. Inset is the actual R_{rs}(555) flight line data rendered into density slices to highlight the spatial variation along the flight path. The inset is an enlargement of the near-shore variability.