

SUPPLEMENTARY MATERIALS FOR

The Pressure of In Situ Gases Instrument (PIGI) for Autonomous Shipboard Measurement of Dissolved O₂ and N₂ in Surface Ocean Waters

By Robert W. Izett and Philippe D. Tortell

Correspondence to: rizett@eoas.ubc.ca

This supplement contains a list of recommended parts and suppliers (**Section S1**), instructions for assembling the PIGI system (**Section S2**), instructions for operation (**Section S3**), and a description of additional files (e.g., technical drawings) and author-provided software (**Section S4**), including the acquisition and processing software. Additional details on the workflow of the acquisition and processing software are provided to facilitate the development of software packages on other platforms (**Section S5**).

ADDITIONAL SUPPLEMENTARY FILES

Technical Drawings

https://tos.org/oceanography/assets/docs/33-2_izett-tech-drawings.pdf

This file contains technical drawings and specifications for the machined parts of the PIGI system (see [Section S2](#)). Parts A–K correspond to the labeled parts in [Diagrams 1–6](#). Drawings were produced using Solidworks software. Three-dimensional CAD assembly and parts files are also provided at https://github.com/rizett/PIGI_system.

Optode Chamber Cleaning Steps Video

<https://youtu.be/KSuN-t1zsTw>

This brief video, available on The Oceanography Society YouTube channel, outlines the steps for cleaning the optode chamber.

Software Files

https://github.com/rizett/PIGI_system

Software for running the PIGI system and processing output data are provided at https://github.com/rizett/PIGI_system. LabVIEW acquisition (including an installer for the run-time engine executable files), AutoIt restart automation, and MATLAB processing scripts are provided.

NOTE: The files contained in this manuscript and supplement are duplicated at seawize.weebly.com/PIGI-system. Refer to this site for updates to the PIGI system, post-publication.

S1. RECOMMENDED PARTS

Table S1. Detailed parts lists and link to sources (click on part name). We provide recommended parts based on specifications required for best performance and in adherence with the system designs provided here. However, some parts are non-specific and can be purchased from other vendors or replaced with equivalent components. The approximate cost column shows the total cost for all components on each line of the table. Assembly notes refer to the numbered footnotes below the tables.

A. WET BOX INSTRUMENTS

	Part (with link to source)	Required	Approx. cost (USD)	Specs.	Assembly Note
1	Aanderaa Optode 4330	1	6,750	5–14 VDC	1
2	Pro-Oceanus TDGP-mini	1	5,000	6–24 VDC	2
3	TDGP flow-through head	1	180		
4	Instrument pump	1	230	24 VDC; 1.1 gal/min (max)	3
5	Instruments flowmeter	1	9	5–12 VDC; 0.3–6 L/min; 7 mm barb	4
6	Primary chamber flowmeter	1	10	5–18 VDC; 1–30 L/min; 1/2" MNPS	4

ASSEMBLY NOTES

1. Cost based on June 2020 quotation for the “standard” sensor used in the PIGI system described in this manuscript. Addition of \$200 US for the 4330F (“fast”) model. Quoted price includes recommended multi-point calibration and RS-232 cable.
2. Cost based on June 2020 quotation. Price includes manufacturer’s deck box (for data acquisition and instrument power supply) and RS-232 logging cable. Flow-through head sold separately (see part no. 3).
3. The outflow must be oriented upward to allow bubbles to escape. Failure to do so will impact consistency of flow and may cause damage to the pump. To change the outflow, remove screws and face plate, rotate face plate so that outflow orients upward (when flow-through system is installed in place), and re-secure faceplate/screws.
4. The primary chamber flowmeter has 1/2" MNPS threads; [1/2" FNPS x 1/2" FNPT](#) and [1/2" FNPS x 1/2" MNPT](#) fittings are required to adapt to the adjoining parts (part nos. 25, 26). The instruments flowmeter has 7 mm barbed fittings that can connect to the adjoining instruments pump and system outflow using 1/4" ID silicone tubing (see assembly note 9).

B. WET BOX: RAW MATERIALS AND ADDITIONAL PARTS

	Part (with link to source)	Required	Approx. cost (USD)	Specs.	Assembly Note
7	Pelican case iM2720	1	230	22" x 17" x 10" (interior)	
8	Debubbling tube	1	2	3" long	5
9	Bulkhead connector for debubbler	1	17		
10	PVC sheeting	1	300	various thickness	6
11	Acrylic tube (for primary chamber)	1	65	4" ID; 4.5" OD; 5" length	7
12	Acrylic tube (for inst. chamber)	1	65	3" ID; 3.5" OD; 4.5" length	7
13	Optode o-ring	1	11	1.7" OD	8
14	Optode chamber o-ring (inflow)	1	10	3" OD	8
15	Optode chamber o-ring (outflow)	1	10	3" OD	8
16	Primary chamber o-ring (inflow)	1	10	4" OD	8
17	Primary chamber o-ring (outflow)	1	10	4" OD	8
18	3/8" staright valve	2	14	PVC ball valve	
19	3/8" elbow valve	2	17	PVC ball valve	
20	3/8" tubing	5 ft	15	silicone	9
21	Tubing insulation	1	3	5/8" ID	10
22	3/8" T-junction	1	4	3/8" FNPT	11
23	3/8" check valve	1	15	3/8" MNPT	12
24	3/8" – 1/2" adapter	1	4	3/8" FNPT x 1/2" MNPT	13
25	1/2" check valve	1	16	1/2" MNPT	14
26	1/2" T valve	1	55	1/2" FNPT	15
27	3/8" tubing adapter	1	10	3/8" MNPT x 1/4" barb	16
28	Worm-drive clamps	15	11	316 SS	17
29	Flow control orifice valve	1	175		18
30	1/4"-20 wing nut	12–22	13	316-SS	19
31	1/4"-20 acorn nut	8	7	316-SS	19
32	1/4"-20 threaded rod	8	20	316-SS	19,20
33	1/4"-20 screw	5–10	8	316-SS	19
34	1/4"-20 thumb screw	10–20	35	316-SS	19
35	1/4"-20 Teflon screw	2	10	1.5" long	21
36	Compression pads	4	40		22

ASSEMBLY NOTES

- The "debubbler" is simply a porous PVC tube, which allows bubbles to escape from the primary chamber and filters out coarse particulates. To fabricate it, drill small (~1/8"–1/4") holes through the tube and cover with a coarse mesh. Secure the mesh with rubber bands or zip ties.
- Requires 0.5", 1", 1.5", and 2" thick sheeting to construct flow-through parts.
- Recommended minimum wall thickness of 0.25".
- Recommended to replace often.
- 3/8" tubing between interior components of flow through system. Small sections of [1/4" tubing](#) will be required to connect between the outflow of the instruments pump and inflow of the instruments flowmeter, and between the outflow the instruments flowmeter and system outflow. Tubing to system and seawater supply will vary.
- Tubing insulation prevents condensation inside wet box.
- Intersection between (a) outflow of the instrument flowmeter, (b) outflow to the discrete sampling line, and (c) rejoin with outflow of primary chamber.
- Recommended to prevent back flow through the instrument chamber.
- Required to adapt between instrument loop and primary chamber.
- Recommended to prevent back flow through the primary chamber.
- Intersection between (a) outflow of the primary chamber, (b) outflow from instrument loop, and (c) system outflow.
- This part, and others, may be required to connect the outflows from the primary and instrument chambers.
- Worm-drive clamps are recommended to secure the interior and exterior tubing to barbed hose fittings.
- This part should be installed between the outflow of the primary chamber and the instrument loop to dampen flow-rate surges in the main seawater supply that produce hydrostatic pressure responses in the GTD readings.
- 316-SS recommended for best corrosion resistance.
- Cut to 7" (x2), 8" (x4), 9" (x2).
- To secure GTD.
- Optional: install on the underside of the baseplate and/or Pelican case for shock resistance. Use thicker pads if desired.

C. ELECTRONIC COMPONENTS

	Part (with link to source)	Required	Approx. cost (USD)	Specs.	Assembly Note
37	Intel Nuc (with Windows O/S)	1	600		
38	Data acquisition board	1	225		
39	Pluggable cables and caps	2	130	Male x Female, 4-pin; 6-ft	23
40	Through-wall pluggable connector	2	68	Male, 4-pin	23
41	Through-wall pluggable connector	2	78	Female, 4-pin	23
42	12 VDC power supply	1	20	54 W	
43	24 VDC power supply	1	20	60 W	
44	DC relay	1	50		
45	Computer box	1	160	15 x 11 x 6 in. (inside)	
46	Computer monitor	1	130	12 in.	
47	USB hub	2	20	4 ports	
48	USB-to-DB9 adapter	4	40	Male DB9 x USB	
49	DB9 cable	3	25	N/A	24
50	HDMI cable	1	5		
51	Wet box terminal	2	25	10-pin	
52	Computer box terminal	1	5	10-pin	
53	Computer box optode/GTD terminal	1	4	8-pin	
54	Computer box cord grip	1	8		
55	Wet box cord grip	1	4		
56	DC Fan	1	4	12 or 24 VDC	
57	Iridium module	1	250		25
58	LabVIEW license	1	400 (1-yr) 3,500 (life)		26
59	Matlab license	1	860 (1-yr) 2,150 (life)		26

ASSEMBLY NOTES

23. Use pluggable connectors to easily (dis)connect the optode and GTD between the wet and computer boxes. One set required each for optode and GTD. Caps (for [cable](#) and [through-wall connectors](#)) and [locking nuts](#) are also required.
24. Cut two short cables (6 ft) for wiring connections inside the computer and wet boxes. Use a long cable (>6 ft) to connect between the computer and wet box.
25. Optional. A second computer, with a view to the sky, may be required.
26. Optional. A LabVIEW license (for the [2019 SP1 development program](#)) is required to modify the LabVIEW software scripts provided here. However, the [LabVIEW run-time engine](#) is available free of charge, and can be used to run our software. If using the stand-alone executable, run the provided [installer](#) to install the necessary files, programs, and drivers. Run the acquisition as described below in Section 4. A MATLAB license is required to run the MATLAB processing scripts, but Section S5 provides details for developing scripts using nonproprietary programs.

S2. ASSEMBLY INSTRUCTIONS

The instructions below provide step-by-step details on the assembly of the wet and electronics boxes of the PIGI system. Numbered parts refer to those listed in [Table S1](#).

NOTE: These instructions are provided as is. Please read through them carefully before proceeding. Exercise care when working with electrical components and consult the instrument manufacturers if you have reservations about cutting cables. The authors are not liable for personal or instrument harm.

S2.1 Flow-Through System (Wet Box)

- Machine the components of the flow-through system (parts A–K) from the raw PVC sheeting (part no. 10; [Table S1](#)) and acrylic tubes (part nos. 11, 12) following the specifications in PIGI4.3_Technical-drawings.PDF in the additional supplementary files.
 - Part A (chamber baseplate): Do not set the placement of the cross-supports until assembly step 6, and do not drill holes through the base until step 7e. The baseplate will secure the primary and instrument chambers to the Pelican case or can be mounted to a wall.
 - Part F (primary chamber inflow/outflow supports): Align the placement of the holes for the stainless steel (SS) rods (part no. 32) with one another, and with the designated holes in the baseplate cross-supports (part A). Do not drill holes until assembling all components.
 - Parts G, H (optode chamber inflow/outflow supports and optode chamber outflow stopper): Align the placement of the holes for the SS rods (part no. 32) with one another and with the designated holes in the baseplate cross-supports (part A). Align the placement of the holes for the SS thumb screws (part no. 34) with one another. Do not drill holes until assembling all components.
- Before assembling the primary chamber, insert the debub-
bler bulkhead connector (part no. 9) through the pri-
mary chamber inflow cap (1.38" hole in part D) as in
[Diagram 1](#). The gasket of the bulkhead connector should
be on the inside of the cap. Secure the debubbling tube
(part no. 8) to the inside of the bulkhead connector, and
cover it with a coarse mesh screen (e.g., use rubber bands
or zip ties to secure a screen over the top of the debubbler—
this will filter some particulate material before entering the
system).
- Assemble the primary chamber following [Diagrams 1 and 4a](#).
Note the placement of the O-rings (part nos. 16, 17) on
parts D and E. Use two 8" long threaded rods (part no. 32)
and a pair of wing nuts and acorn nuts (part nos. 30, 31) to
secure the end plates (part F) together at the top (see step
1b above). The screws only need to be finger tight. The end
plates will compress the O-ring (part no. 17) on part E to
make a sealed fit.

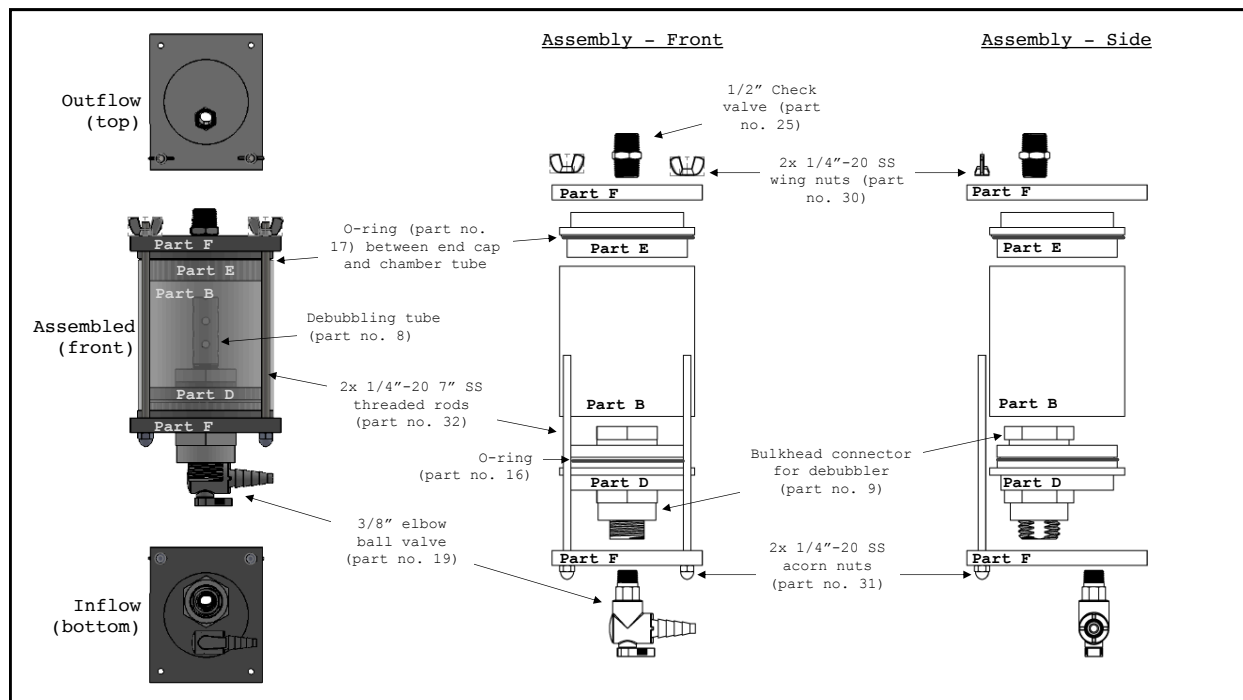


Diagram 1. Primary chamber assembly. The debubbler (part nos. 8 and 9) is shown in the assembled image (left), but not in the two assembly diagrams (middle and right). All projections represent the same assembly components.

4. Assemble the optode chamber following [Diagram 2](#). Note the placement of the O-rings (part nos. 14, 15) on parts I and J. The optode should be securely fastened into part K. Insert the optode O-ring (part no. 13) around the optode, as in [Diagram 2](#). Secure part K to part I using stainless steel screws (note the holes in part K). Ensure a tight seal in order to compress the optode O-ring between parts I and K.
5. Assemble the rest of the instrument chamber following [Diagrams 3 and 4b](#). Secure the GTD through the holes in parts G and H using Teflon screws (part no. 35). Use two 7" long threaded rods (part no. 32) and a pair of wing nuts (part nos. 30, 31) to secure the end plates (part G) and optode chamber support (part H) together at the top, and use four thumb screws (part no. 34) and wing

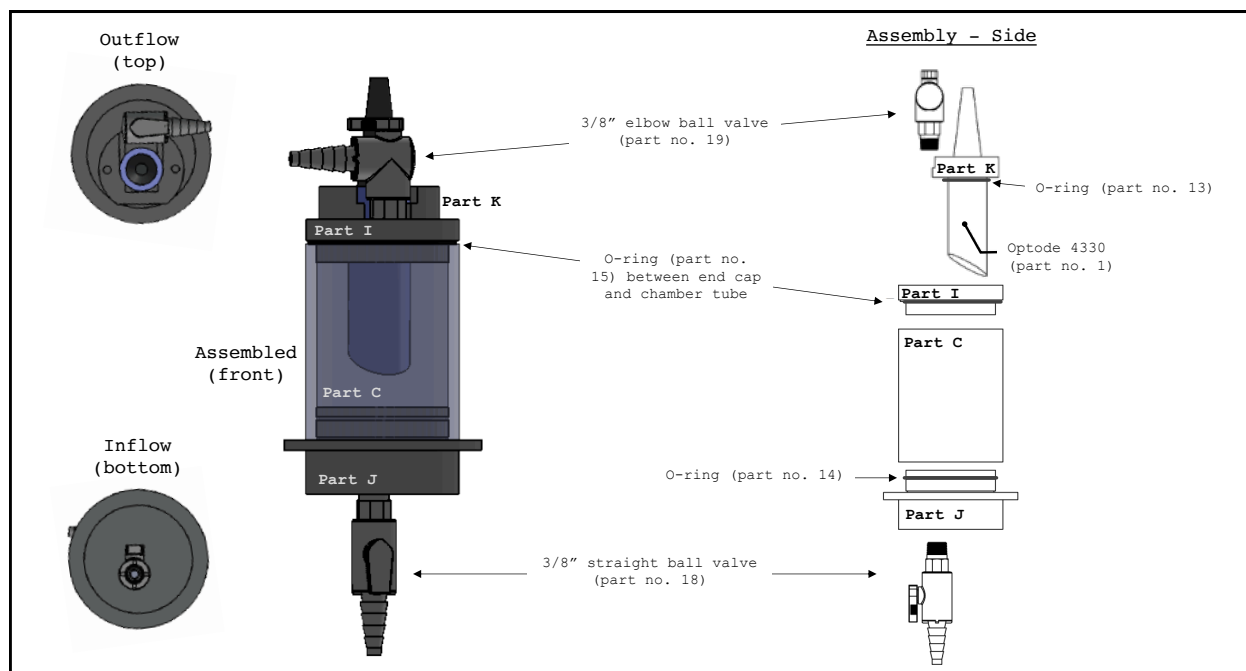


Diagram 2. Optode chamber assembly. All projections represent the same assembly components.

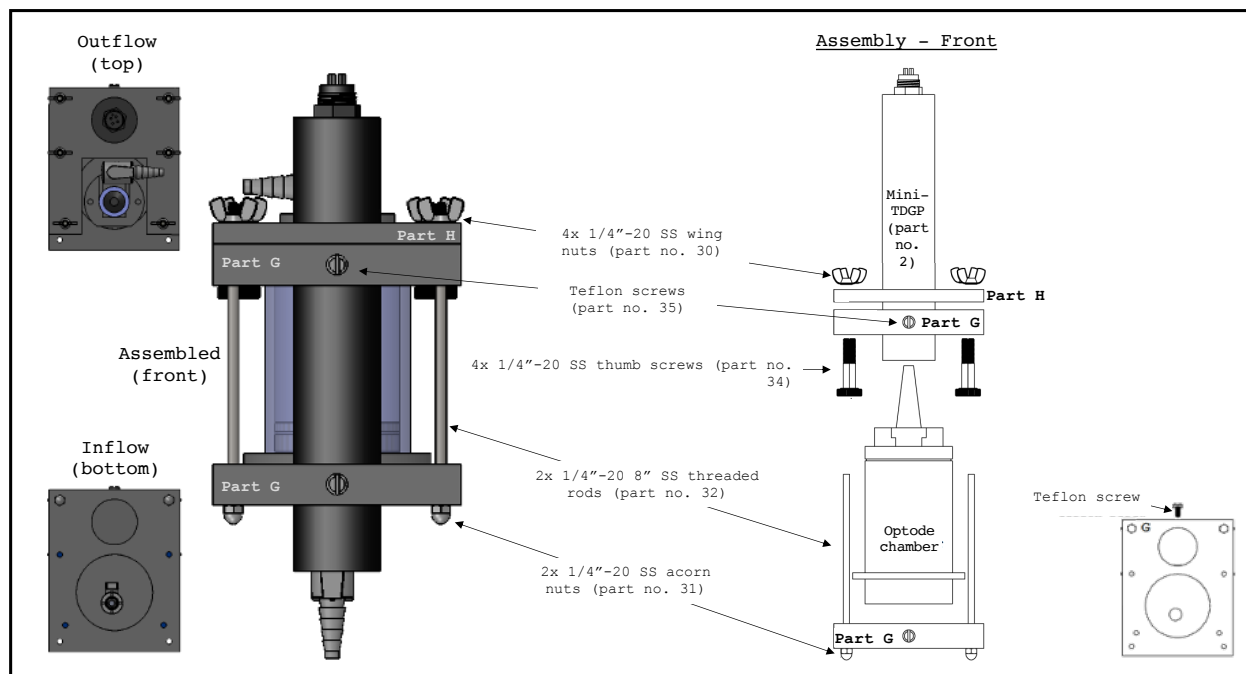


Diagram 3. Instrument chamber assembly. All projections represent the same assembly components.

nuts to fasten parts G and H together (see step 1c above). The screws only need to be finger tight. The end plates will compress the O-ring on part I of the optode chamber to make a sealed fit with the chamber tube (part C).

6. Following [Diagrams 5b and 6](#), install the plumbing components at the outflow of the primary chamber:
 - a. Install the 1/2" check valve (part no. 25) at the outflow of the primary chamber (see 1/2" NPT hole labeled on part E in PIGI4.3_Technical-drawings.pdf in the additional supplementary files). Note the direction of the valve to prevent backflow into the primary chamber.

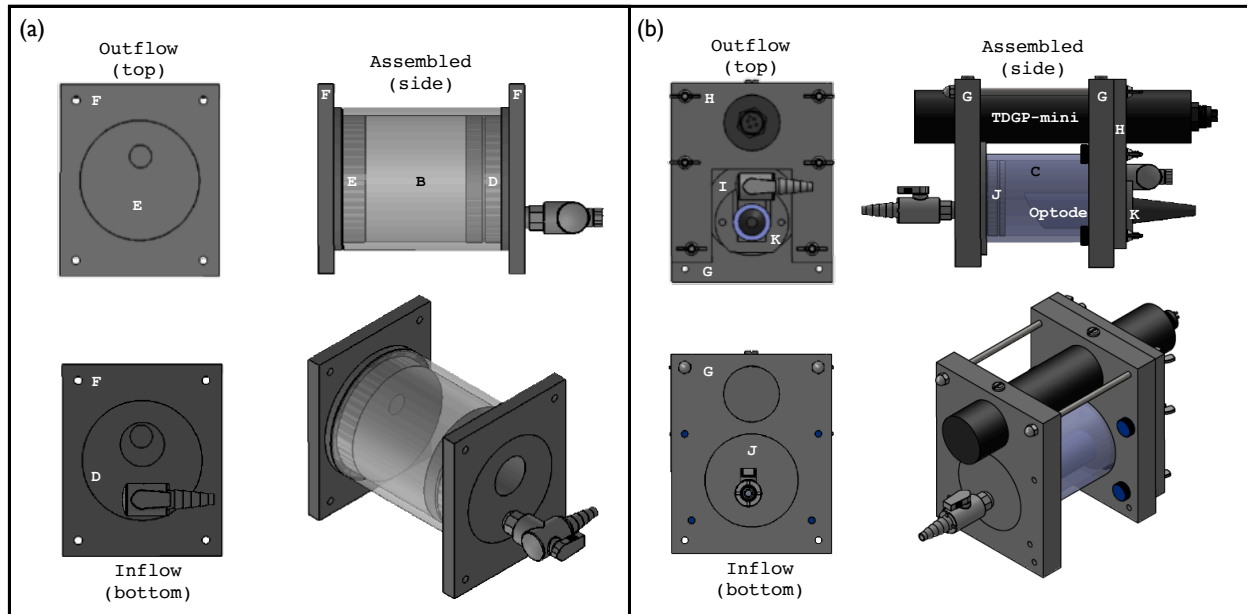


Diagram 4. Assembled primary (a) and instrument (b) chambers. The debubbling components (part nos. 8, 9) are not shown in (a). Labeled parts correspond with the machined components in PIGI4.3_Technical-drawings.PDF.

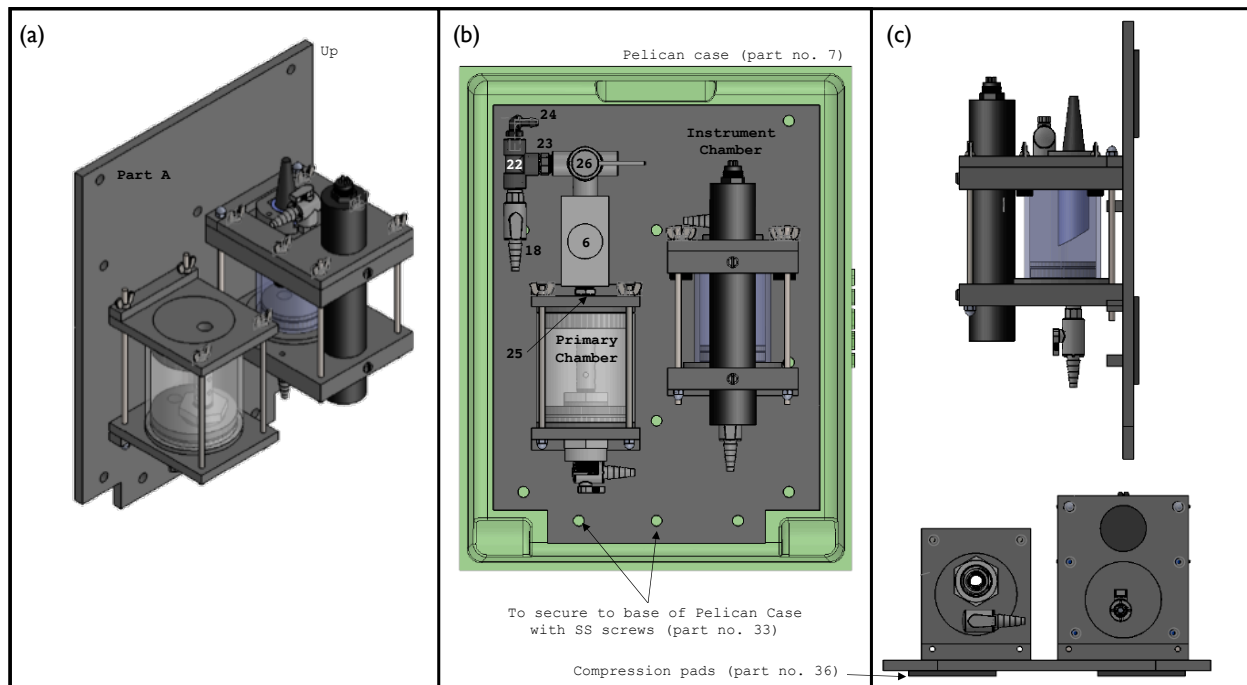


Diagram 5. Assembled flow-through chambers on baseplate (Pelican case shown in green in panel (b)). Panel (b) shows the top-down view, and panel (c) shows the side and front views. Numbered parts in panel (b) represent the plumbing components at the outflow of the primary chamber and correspond with labeled parts in Diagram 6 and Table S1.

- b. Connect the primary chamber flowmeter (part no. 6) to the check valve at the outflow of the primary chamber.
 - c. Assemble the pipe fittings at the outflow of the primary chamber flowmeter. Connect the three-way valve (part no. 26) directly to the flowmeter. One of the remaining ports on the valve will direct water to the system outflow, and the remaining port will connect to the instrument loop. Connect the 1/2"–3/8" adapter (part no. 24), 3/8" T-junction (part no. 22) and 3/8" check valve (part no. 23) as in [Diagrams 5b and 6](#). Note the direction of the check valve and seawater flow (see arrows in [Diagram 6](#)) to prevent backflow into the instrument loop.
 - i. Use the three-way manual valve (part no. 26) to isolate different components of the system. For example, the valve can be closed to prevent circulation through either the primary or instrument chambers. The fittings to connect the valve to the system outflow will vary by deployment/ship. Flexible Tygon tubing is recommended where possible.
7. Once the primary and instrument chambers are assembled, decide on the placement of the baseplate (part A) cross-supports. Secure the supports to the baseplate using stainless steel screws or glue. Following [Diagram 5](#), secure the primary and instrument chambers between the cross-supports.
- a. Use two 9" long threaded rods (part no. 32) and a pair of wing nuts and acorn nuts (part nos. 30, 31) to secure the primary chamber to the baseplate (see step 1b above). The screws only need to be finger tight.
 - b. Use two 8" long threaded rods (part no. 32) and a pair of wing nuts and acorn nuts (part nos. 30, 31) to secure the instrument chamber to the baseplate (see step 1c above). The screws only need to be finger tight.
- NOTE: The faces of the optode and the GTD should face downward, with the flow of water directed onto them.*
8. Following [Diagram 6](#), assemble the remaining ancillary components of the wet box.
 - a. Install the instrument pump (part no. 4) and instrument flowmeter (part no. 5) downstream of the instrument chamber by securing them to the Pelican case or baseplate.
 - b. Connect the primary and instrument chambers using the 3/8" tubing (blue lines in [Diagram 6](#); part no. 20), and connect the outflow of the optode chamber to the pump and flowmeter. Connect the outflow from the instrument flowmeter to the outflow of the primary chamber and install the fittings (part nos. 18, 22, 23, 27) for the discrete sampling line. Note that 1/4" tubing is required to connect the instruments flowmeter to the adjacent parts (see assembly note for part no. 20). Use worm-drive clamps/hose clamps as necessary to secure the tubing to the barbed GTD flow-through head, valves and fittings.

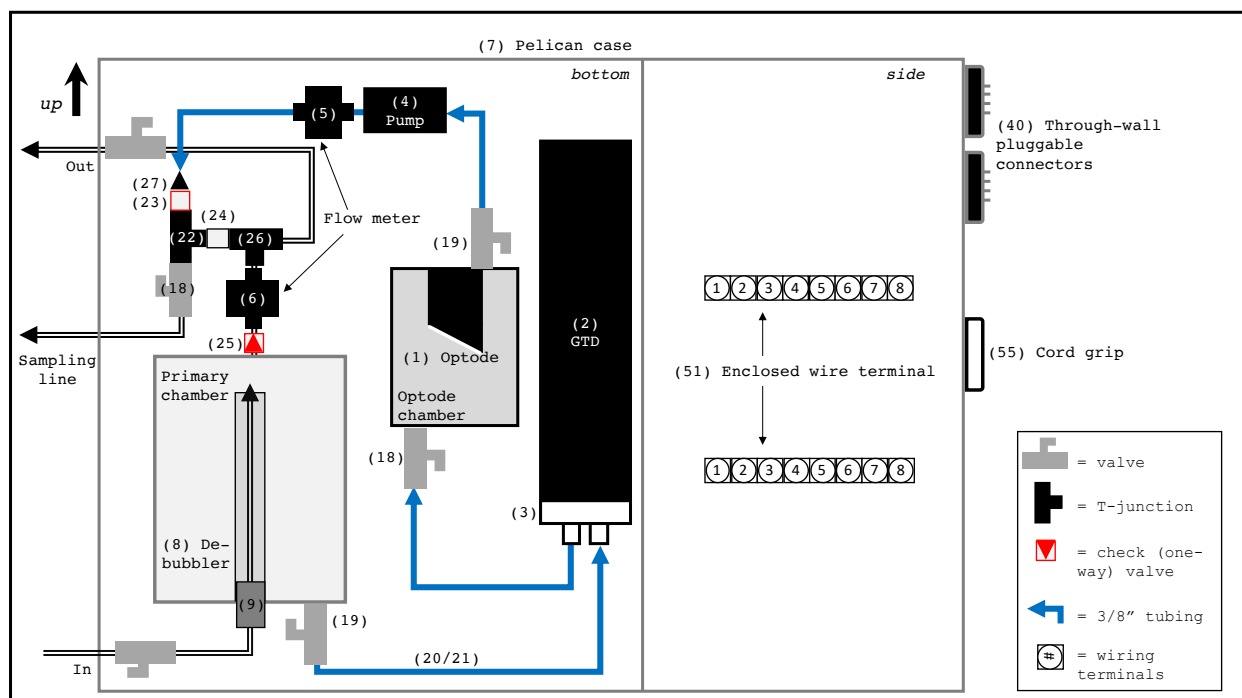


Diagram 6. A schematic of the wet box assembly showing the top-down view of the base of the Pelican case (left) and an inside side panel (right).

- i. *Optional:* Install a flow controller in the instrument loop or before the inflow to the primary chamber to maintain constant flow and avoid hydrostatic pressure effects on GTD measurements (see main text). Part no. 29, a flow control orifice, is incorporated to minimize fluctuations in flow through the instruments loop. It should be installed within the instrument loop.
- c. Drill holes in the side of the case to allow inflow and outflow tubing to pass through. The size of the holes, and the tubing/connectors used to connect to the ship's seawater supply will vary by deployment/vessel. Flexible Tygon tubing is recommended where possible.
- d. Drill a set of holes in the bottom of the Pelican case to allow water to escape in the event of a leak.
- e. Insert the assembled flow-through system into the Pelican case (part no. 7).
 - i. *Optional:* add adhesive compression pads (part no. 36) underneath the baseplate (as in [Diagram 5c](#)) or underneath the Pelican case for shock absorption.
 - ii. Drill holes through the bottom of the chamber base ([Diagram 5](#), and part A) and Pelican case and use the thumb screws (part no. 34) and wing nuts (part no. 30) to secure the base to the case (see step 1a above).
9. Drill holes near the top/side of the Pelican case box for:
 - a. Two through-wall pluggable connectors for the optode and GTD wiring (part no. 40)
 - b. One cord grip (part no. 55) for the ancillary wires. The cable for the ancillary devices will pass through the cord grip.
10. Install the through wall connectors and wire grip on the side of the Pelican case using the corresponding nuts (see assembly notes for part no. 40).
 - a. Install the connectors so that the free wires are directed inwards (as in [Diagrams 6, 8, and 10](#)). The free wires will connect to wire terminals inside the wet box (see [Section S2.3](#) below), and the external side connects to the electronics box via pluggable cables.

S2.2 Electronics Box Assembly

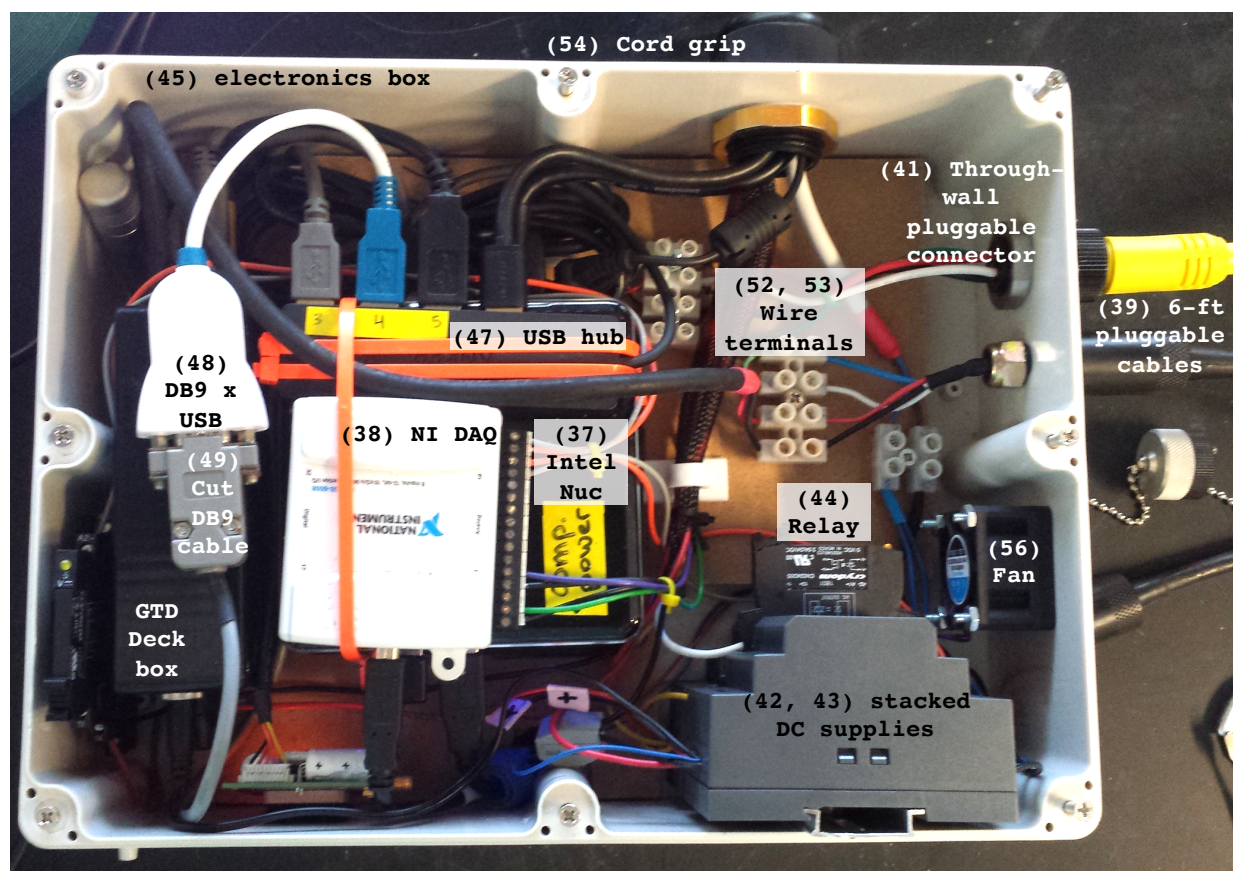


Figure S1. A photo of an assembled electronics box. Numbered parts correspond with parts in Diagram 7 and Table S1.

1. Following [Diagram 7](#), configure the placement of the Nuc (part no. 37), data acquisition board (part no. 38), GTD deck box, relay (part no. 44), power supplies (part nos. 42, 43), and USB hub (part no. 47) within the electronics box. It is best if all components are secured in the box, but this should be done during assembly step 5, after the wiring is complete.
2. Drill holes in the side of the electronics box for:
 - a. Two through-wall connectors for the optode and GTD wiring (part no. 41).
 - b. One wire grip (part no. 54) for the ancillary wires and power cables. The cable for the ancillary devices, Nuc power cable, Nuc/monitor HDMI cable, and AC power cable for the power supplies will pass through the wire grip.
3. Install the through-wall connectors and wire grip on the side of the electronics box using the corresponding nuts (see assembly note for part no. 41).
 - a. Install the connectors so that the free wires are directed inward. The free wires will connect to wire terminals (part no. 53) inside the electronics box (see [Section S2.3](#) below), and the pluggable end will connect to the wet box via pluggable cables (part no. 39).
4. Wire the gas sensors and ancillary devices following the steps in [Section S2.3](#) below.
5. Secure the components of the electronics box (see step 1) to the base or sides of the electronics box.
 - a. The power supplies and relay can be mounted on a DIN-rail secured to the base or side of the electronics box.
6. Mount the monitor on the lid of the electronics box.

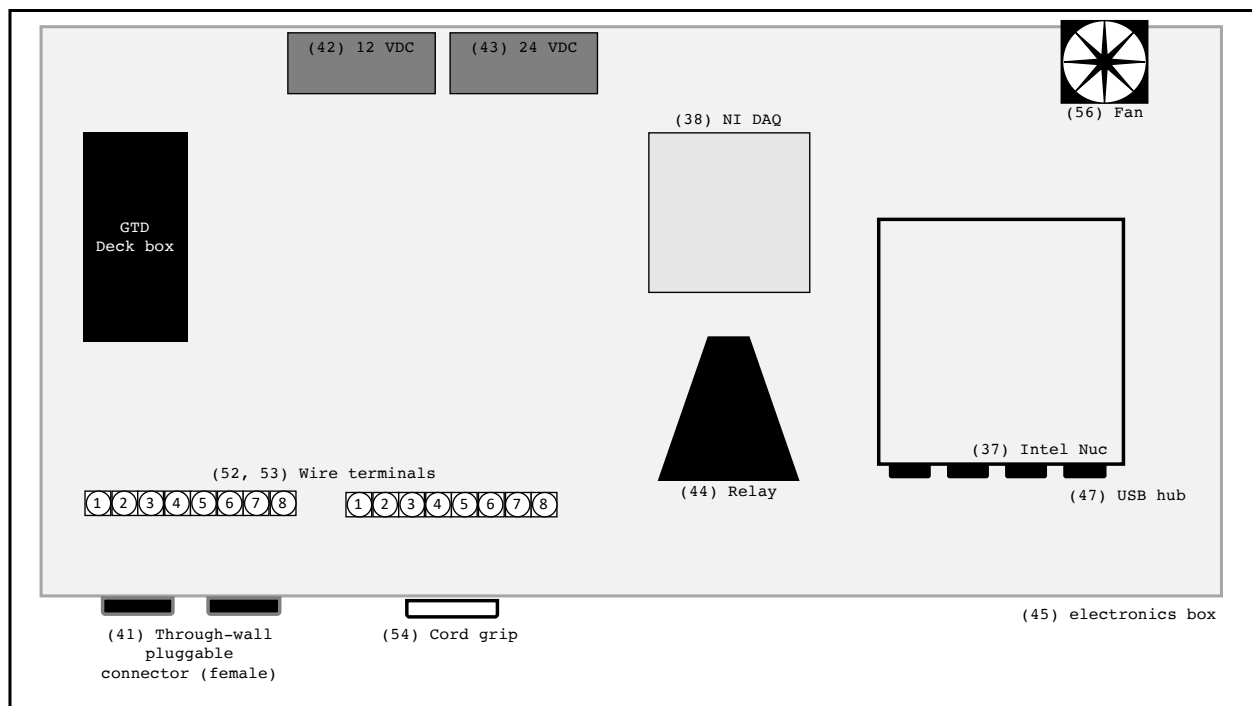


Diagram 7. Schematic of the electronics box setup, corresponding with Figure S1. Note that components are not to size and can be placed in an alternative configuration.

S2.3 Cables, Wiring, and Connections

OPTODE

1. After installing the optode in the support (part K), and assembling the wet box, connect the TXD, RXD, +5 VDC, and ground wires from the free end of the optode cable to the four cables of a through-wall connector (part no. 40) via the enclosed wire terminal (part no. 51), as in [Diagram 8](#). See the pin-out diagram in the optode manufacturer's manual to identify the wires.
 - a. The enclosed wire terminal should be secured to an internal side wall of the Pelican case; the same terminal will be used for the optode and GTD cables.

*NOTE: It may be necessary to shorten the optode cable so that there is not too much excess inside the wet box. However, do not cut the cable too short; it is good to maintain some excess length (~2–3 ft) of cable so that the optode can be removed easily for cleaning. **Do not** cut the optode cable until the final assembly step, and consult the manufacturer's manual before doing so.*
2. Use the 6 ft pluggable cable (part no. 39) to connect the optode wet box pluggable connector (part no. 40) to the corresponding through-wall connector plug (part no. 41) on the outside of the electronics box shown in [Diagrams 8 and 9](#).
3. On the inside of the electronics box, connect the four free wires of the through-wall connector to a DB9 cable cut to expose the free wires (part no. 49; see assembly note).
 - a. Locate the TXD, RXD, +5 VDC, and ground wires on the cut DB9 cable using an ohmmeter, and align them with the corresponding optode cables (see DB9 pinout in [Diagram 9](#)).
4. Connect the cut DB9 cable to a DB9-to-USB converter (part no. 48), and connect to a free port on the USB hub (part no. 47). Note the communication port location on the computer.

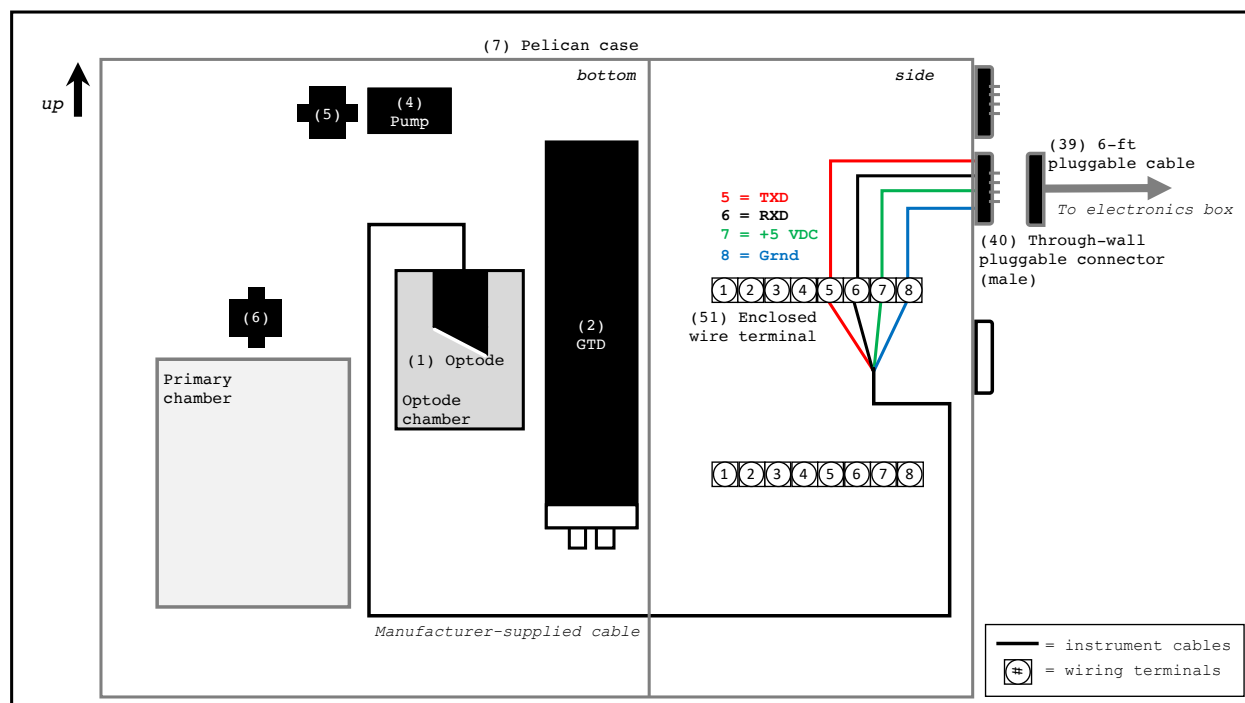


Diagram 8. Optode wet box wiring. Note that wire colors do not necessarily reflect those in the actual cables. Consult the manufacturers' manuals to correctly identify wires.

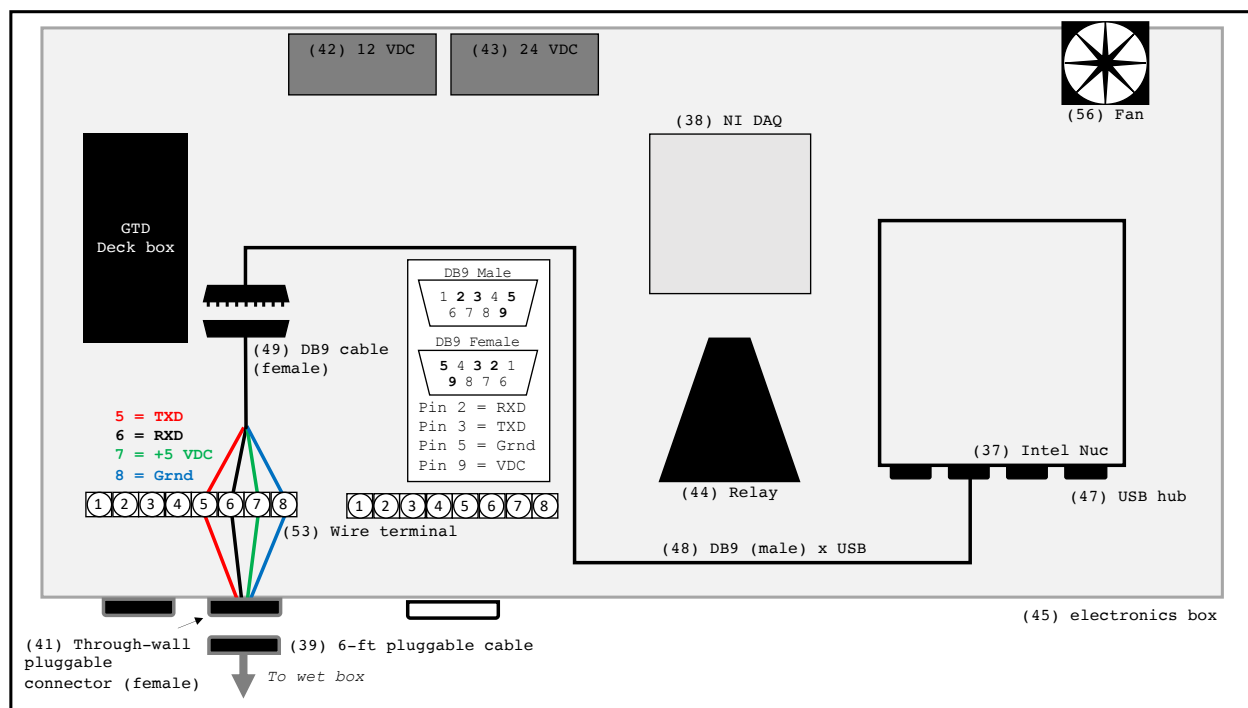


Diagram 9. Optode electronics box wiring. Note that wire colors do not necessarily reflect those in the actual cable.

GTD

1. Cut the GTD serial cable attached to the deck box to expose the wires inside. Leave *at least* 1–2 ft of cable length attached to the deck box, and *at least* 2–3 ft of free cable to attach to the GTD sensor.

NOTE: Consult the manufacturer's manual before cutting the GTD cable.

2. Inside the wet box, attach the free end of the GTD cable to the GTD, and connect the exposed TXD, RXD, +5 VDC, and ground wires to the four cables of a through-wall connector (part no. 40) via the enclosed wire terminal (part no. 51), as in [Diagram 10](#). See the pin-out diagram in the GTD manufacturer's manual to identify the wires.

- a. The enclosed wire terminal should be secured to an inside side wall of the Pelican case; the same terminal will be used for the optode and GTD cables.

*NOTE: It may be necessary to shorten the GTD cable so that there is not too much excess inside the wet box. However, do not cut the cable too short; it is important to maintain some excess length (~2–3 ft) of cable so that the GTD can be removed easily for cleaning. **Do not** cut the GTD cable until the final assembly step, and consult the manufacturer's manual before doing so.*

3. Use the 6 ft pluggable cable (part no. 39) to connect the GTD wet box pluggable connector (part no. 40) to the corresponding through-wall connector plug (part no. 41) on the outside of the electronics box shown in [Diagrams 10 and 11](#).
4. On the inside of the electronics box, connect the four free wires of the through-wall connector to the corresponding TXD, RXD, +5 VDC, and ground wires on the cut length of cable extending from the GTD deck box. Join the cables via the wire terminal (part no. 53) as in [Diagram 11](#).
5. Connect the GTD deck box to a free port on the USB hub (part no. 47) using a DB9-to-USB converter (part no. 48). Note the communication port location on the computer.

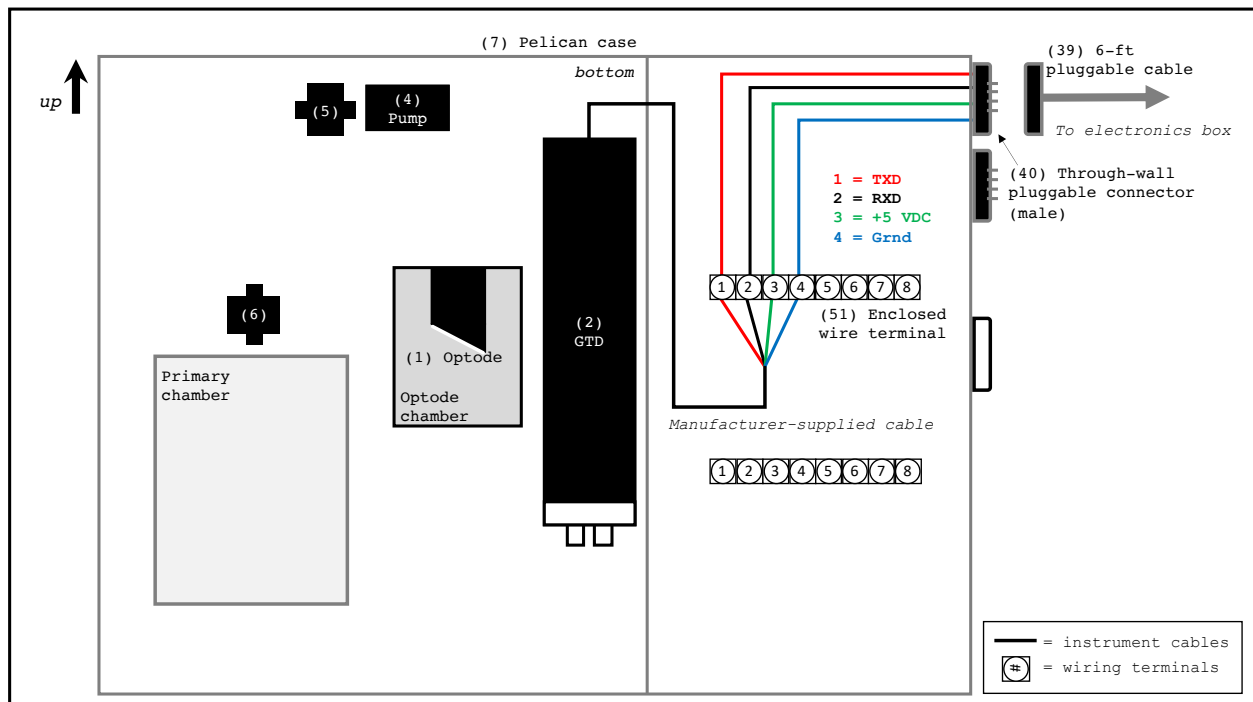


Diagram 10. GTD wet box wiring. Note that wire colors do not necessarily reflect those in the actual cables.

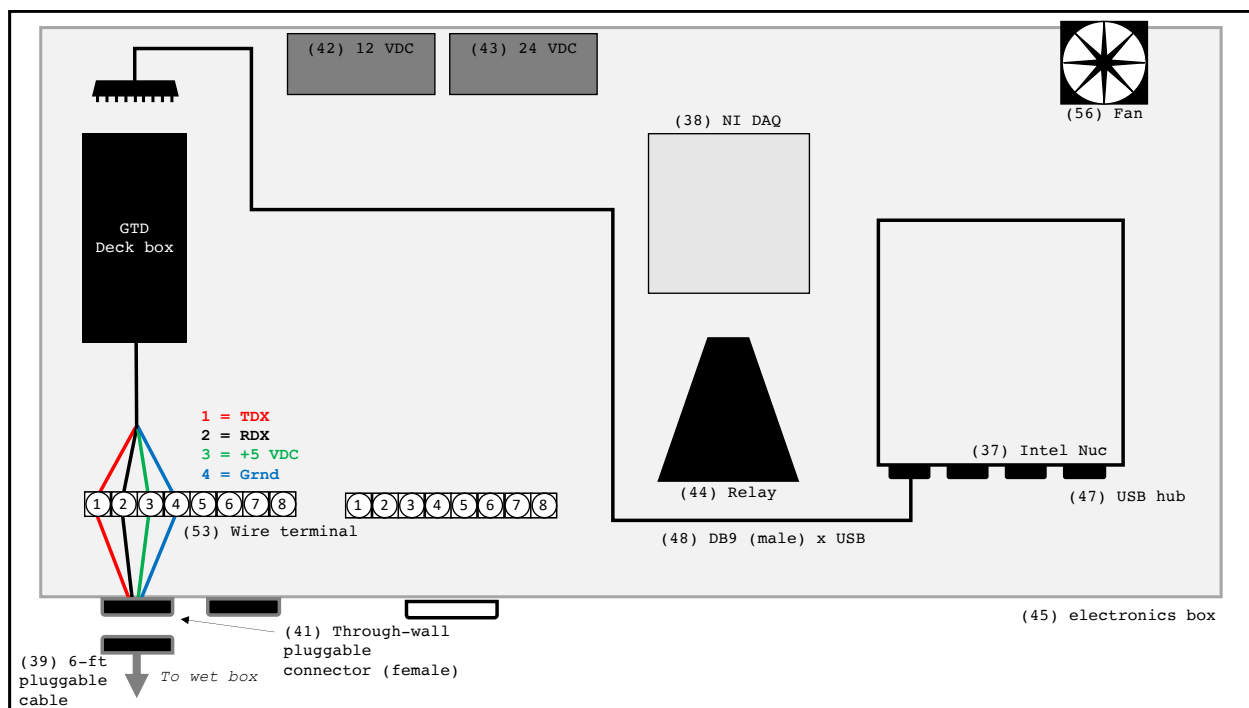


Diagram 11. GTD electronics box wiring. Note that wire colors do not necessarily reflect those in the actual cables.

ANCILLARY COMPONENTS (FLOWMETERS AND PUMP)

1. Cut a DB9 cable (part no. 49; see assembly note) to expose the wires inside. Cut both pieces to ~2 ft long. Insert the free ends of both cut cables through the cord grips (part nos. 54, 55) mounted on the sides of the Pelican case (Diagram 12) and electronics box (Diagram 13), respectively. The heads of the DB9 cable will face the outside of the wet and electronics boxes.
2. Inside the wet box, connect the power and signal cables of the ancillary devices (pump and flowmeters) to the cut DB9 cable via an enclosed wire terminal (part no. 51) mounted to the side of the Pelican case (Diagram 12).
3. Inside the electronics box, connect the other end of the cut serial cable to a wire terminal (part no. 52), and then connect corresponding wires to the electrical components as shown in Diagram 13.
4. Connect the DAQ board (part no. 38) to a free outlet on the USB hub. Use the supplied National Instruments software, NI-DAQmx, to test the instruments and note the device name.
5. Use a long DB9 cable (part no. 49) to connect between the wet box and a DB9 cable extending outside of the serial box.

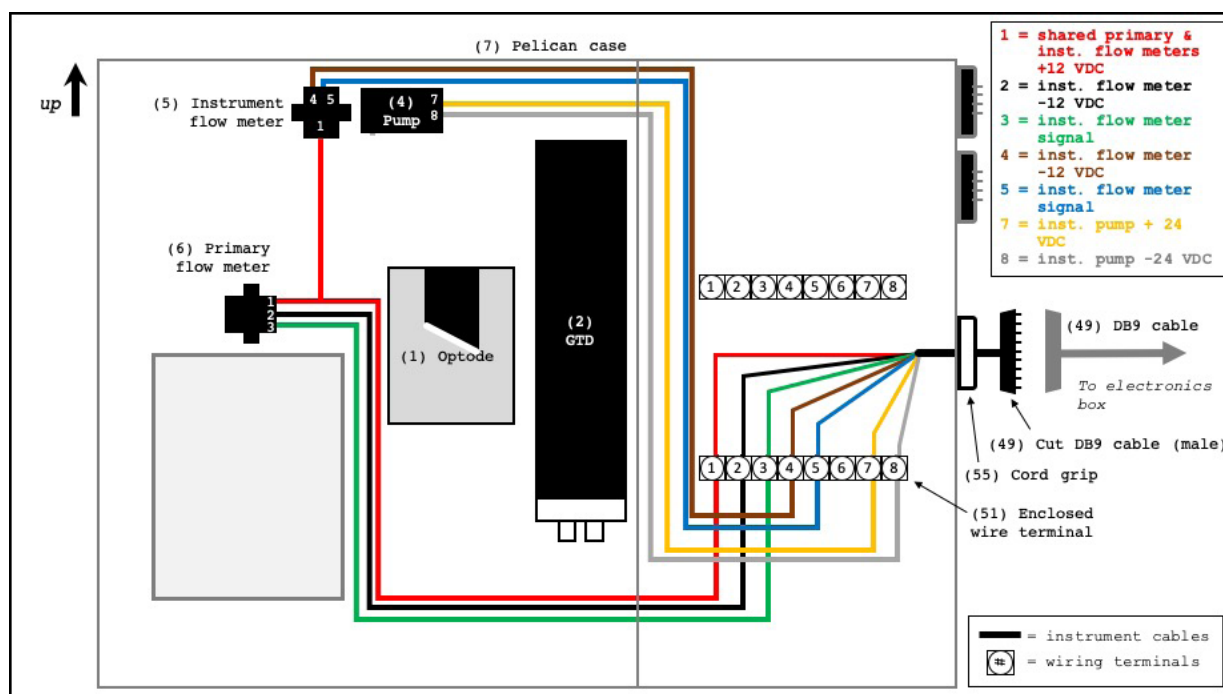


Diagram 12. Ancillary components wet box wiring. Note that wire colors do not necessarily reflect those in the actual cables.



OTHER WIRING

1. Pass the AC power cables for the Nuc and the two DC power supplies through the wire grip (part no. 54) on the side of the electronics box. Connect the cables to a power bar, outlet, or UPS.
2. Pass an HDMI cable through the wire grip to connect the computer monitor to the Nuc.
3. We recommend installing a small DC fan (part no. 56) on the side of the electronics box to avoid overheating. Connect the fan to a DC power supply (see [Diagram 14](#)).

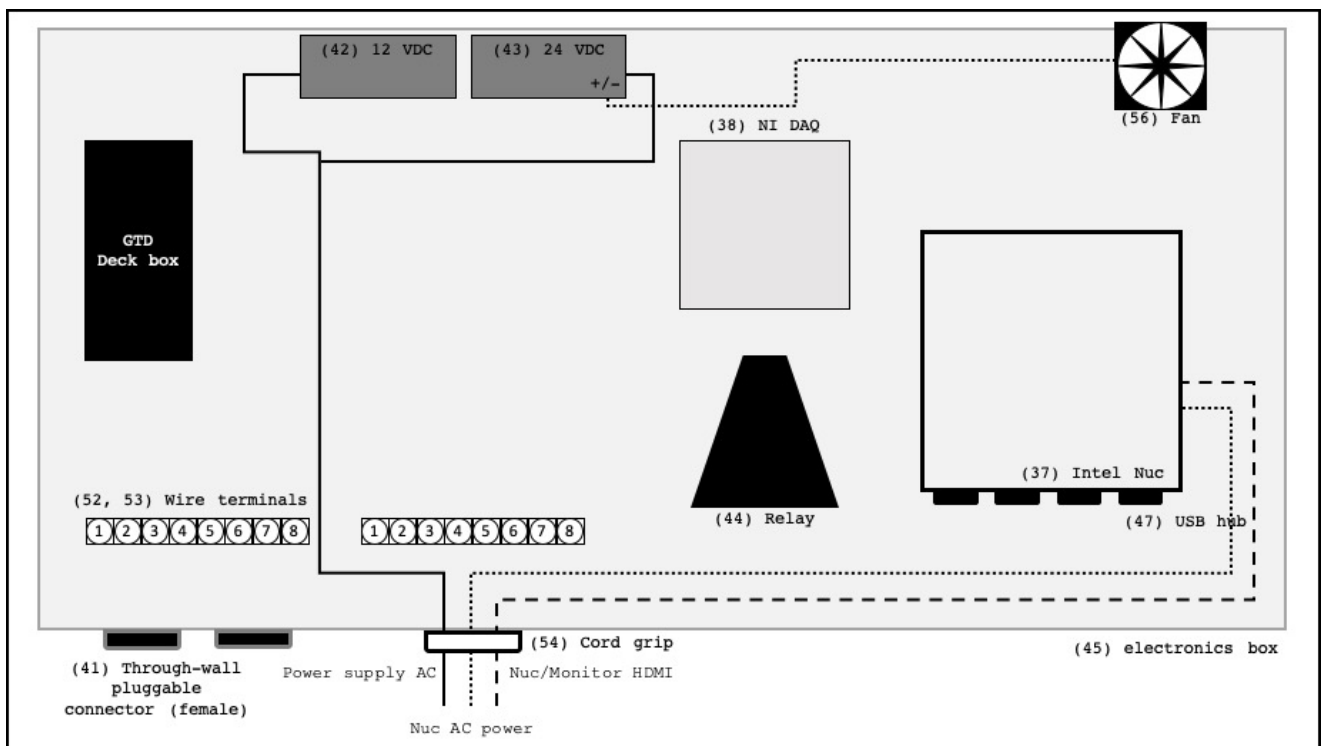


Diagram 14. Wiring for additional electronics box components.

S3. OPERATION INSTRUCTIONS

S3.1 Setup and Running Acquisition

1. Connect the wet and electronics boxes via the long plugable and DB9 cables. Power-on the computer and power supplies. Test the instruments and software before plumbing the system (see steps 4–7).
2. Orient the Pelican case upward (with sensor faces pointing down) or mount the flow-through chambers on a wall or grating (see [Diagram 5](#) and [Figure 1 in the main text](#)). Connect the flow-through system inflow and outflow lines to the seawater supply. The size of fittings and tubing will vary by deployment platform. Flexible Tygon tubing is recommended where possible. We also recommend installing isolation valves between the PIGI system (inflow and outflow lines) and the main seawater supply line to facilitate cleaning and troubleshooting (see isolation valves in [Diagram 6](#)).
3. When confident that the system is sealed, open the inflow and outflow isolation valves, and allow water to pass through the system. Keep the isolation valves in the instrument loop open at all times, unless there is need to restrict flow to the instruments (e.g., for cleaning). Make sure that the valve to the discrete sampling line remains closed.
 - a. Use the three-way manual valve installed at the outflow of the primary chamber to isolate components of the system, if necessary. For example, it may be necessary at some point to close the valve at the outflow of the primary chamber to force water through the instrument loop and prime the pump. Generally, this line should be left fully open to allow bubbles to escape.
4. Open the LabVIEW software library PIGI4.3_Library_2020.lib, and open the main acquisition program autoPIGI_underway_2020.vi ([Figure S2](#)). Alternatively, run the autoPIGI_underway_2020.exe executable file on the LabVIEW run-time engine. See [Section S4](#) for details.
5. Start the program by clicking the run arrow in the LabVIEW program (see upper left corner of the window).
6. Check the deployment and control settings and data-save directories in the autoPIGI_underway_2020 program, and confirm that the instrument communication ports are set correctly ([Figure S3](#)). Set the pump control mode to the desired manual or automatic program. If using the automatic pumping program, specify the pumping rate threshold for automatically turning off the seawater pump. Note that the main acquisition program will save data continuously to a main storage location on the Nuc hard drive, and to a secondary, external location. Check that the serial numbers for the optode and GTD instruments have been specified correctly; the LabVIEW acquisition reads the optode serial number from the data stream.
7. In the Automated Acquisition Restart Program panel ([Figure S6](#)), set the desired time interval between acquisition restarts. This section of the program will automatically restart the acquisition (i.e., clear the data figures and refresh the main acquisition) at a user-defined interval to prevent a reduction in computer performance as data are stored in LabVIEW cached memory.
8. Once the settings are correctly specified, click the blue START ACQUISITION button to begin collecting data ([Figure S3](#)). The program will first save the metadata and instrument settings to separate files before initiating the data collection and then continuously reading, writing, and plotting data. The automated restart countdown, which controls the AutoIt software (see [Section S4](#) for details), will also begin once the acquisition has been started.

NOTE: Do not click the START ACQUISITION button again, as this will cause an error with the automated restart program.
9. If using the automatic pump control program, the instrument pump will turn on when the acquisition begins. Otherwise, use the manual toggle on the front panel of the acquisition program to turn on the pump ([Figure S3](#)). The indicator on the screen will illuminate when the pump is on. Adjust the flow rates if necessary by increasing/decreasing the voltage output from the 24 VDC supply powering the instrument loop pump, as shown in [Figure S5](#).
10. When the automation restart countdown reaches the user-defined restart interval value, the AutoIt program will automatically stop and then restart the acquisition program. Do not use the mouse during this time.
11. At the end of the deployment, click the STOP or the red stop sign (upper right corner of the window) buttons to end the data acquisition.

S3.2 End of Acquisition and Cleaning

1. At the end of a deployment, stop the LabVIEW program.
2. Turn off the flow of seawater through the instrument and close all of the isolation valves. Disconnect the inflow and outflow tubing between the primary chamber and the ship's seawater supply lines.
3. Disconnect the cables between the wet box and electronics box.
4. We recommend flowing warm, freshwater through the system for ~5–10 minutes after each deployment to minimize system wear. Clean the chambers and instruments, following the example in the supplemental video (<https://youtu.be/KSuN-t1zsTw>).
 - a. Use the manual valves (part nos. 18, 19, and 26) to isolate different sections of the system. It is possible to isolate and remove the primary and secondary chambers separately for easy cleaning/maintenance.
 - b. Note that cleaning may be required during deployments in highly productive waters with significant particulate loads.

S4. DESCRIPTION OF ADDITIONAL FILES AND SOFTWARE

The PIGI system operates (collects, saves, and displays data) through LabVIEW and AutoIt programs. Details of these programs and MATLAB scripts used to automatically process the data are presented below. The software (including example output from the LabVIEW program and corresponding output from the MATLAB processing scripts) can be downloaded from https://github.com/rizett/PIGI_system.

NOTE: The main functions and scripts provided here were written by R. Izett. Additional software not written by R. Izett are cited accordingly.

NOTE: Here and throughout, unless stated otherwise, we define gas saturation as the in situ seawater gas concentration, normalized to the temperature and salinity-dependent equilibrium concentration at ambient sea level pressure and 0 dbar hydrostatic pressure. In the case of the optode readout (e.g., Figure S4), O₂ saturation refers to the dissolved gas concentration normalized to the temperature and salinity-dependent equilibrium concentration at 1 atm standard atmospheric pressure and 0 dbar hydrostatic pressure. Temperature and salinity are defined here as those values read by the optode temperature sensor and the constant/hardwired optode salinity value, respectively. Unless configured otherwise by the user, a value of 0 PSU is used by the optode; refer to the manufacturer's manual for details.

S4.1 LabVIEW

NOTE: The LabVIEW software provided here was written using LabVIEW 2019 (SP1) development program. A license for this version, or newer, is required to open and modify the provided scripts (see Table S1). However, the free, stand-alone run-time engine (version 2019; assembly note #26 in Table S1) is sufficient to run the executable programs to perform autonomous data acquisition. Run the installer to install our LabVIEW programs (descriptions below) and the necessary run-time software and drivers. A description of the acquisition workflow is provided in Section S5, below, for operators who wish to develop alternative software.

PIGI4.3_Library_2020

This package contains all of the LabVIEW programs required to run the PIGI system (Figure S2). The main program is `autoPIGI_underway_2020.vi`. Other subprograms run individual components of the system.

NOTE: The descriptions of the files below are the same for versions run in the LabVIEW development software and in the run-time engine program.

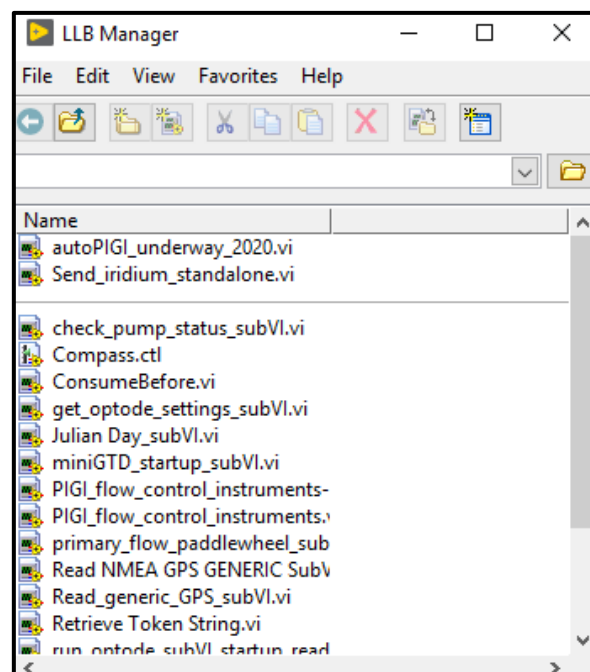


Figure S2. The autoPIGI LabVIEW library. All of the LabVIEW programs used to communicate with the instruments and log data are found within this library. The top two programs listed (above the gray line) execute the main system functions and call subprograms listed below).

autoPIGI_underway_2020.vi or autoPIGI_underway_2020.exe

(Figures S3 and S4) This is the main LabVIEW program used to interface with the PIGI system. The program acquires, logs, and displays data in real time and can be used to control the instrument loop pump. The data headers in the output ASCII data files (.lvm extension is a tab-delimited text file) are:

Computer Julian Day = Year-day time corresponding with the computer system time-stamp.

O₂ saturation = Raw optode percent saturation (%/100) at measured temperature and input salinity.

O₂ concentration = Raw optode concentration ($\mu\text{mol L}^{-1}$) at measured temperature and input salinity.

Optode temperature = Water temperature ($^{\circ}\text{C}$) measured by the optode.

TDGP/GTD total dissolved gas pressure = Uncalibrated total dissolved gas pressure (mbar)

TDGP/GTD temperature = Temperature ($^{\circ}\text{C}$) measured by the TDGP.

Instruments flow rate = Flow rate (L min^{-1}) of water exiting the optode chamber.

GPS Julian Day = Year-day time corresponding with the GPS system timestamp (if connected; 0 if not connected).

GPS Latitude = Latitude ($^{\circ}\text{N}$) from the ship's GTD (if connected; 0 if not connected).

GPS Longitude = Longitude ($^{\circ}\text{E}$) from the ship's GTD (if connected; 0 if not connected).

CalPhase = Optode raw CalPhase/phase shift (refer to manufacturer's manual).

TC Phase = Optode raw TC Phase (refer to manufacturer's manual).

c1rph = Optode raw c1rph (refer to manufacturer's manual).

c2rph = Optode raw c2rph (refer to manufacturer's manual).

c1_amp = Optode raw c1_amp (refer to manufacturer's manual).

c2_amp = Optode raw c2_amp (refer to manufacturer's manual).

opt_raw_T = Optode raw temperature (refer to manufacturer's manual).

supply_V = TDGP voltage supply (refer to manufacturer's manual).

ana1 = TDGP raw analog 1 (refer to manufacturer's manual).

ana2 = TDGP raw analog 2 (refer to manufacturer's manual).

dig1 = TDGP raw digital 1 (refer to manufacturer's manual).

dig2 = TDGP raw digital 2 (refer to manufacturer's manual).

Pump status = Indicator if pump is on (1) or off (0).

Primary chamber flow rate = Flow rate (L min^{-1}) of water exiting the primary chamber.

The main features of the program are:

- Information and Notes** (blue box in Figure S3): Here, information about the deployment can be recorded. For example, the optode/GTD serial numbers and deployment details can be recorded (note the required formats). This information is useful when post-processing the data. The user will also specify the directory locations for saving data files ("Save Path" and "Backup Save Path" objects).

Figure S3. Front panel image of the autoPIGI_underway_2020 LabVIEW program. The Information and Notes (blue), User Control (red), Pump Control (green), and Iridium module (orange) sections are shown.

- b. **User Control** (red box in Figure S3): In this section, the communication ports for the instruments and the system sampling rate can be set. The user can select to include a GPS connection (via RS232). The “NI USB Dev. Name” refers to the name of the data acquisition board (part no. 38 in Table S1).
- c. **Pump Control** (green box in Figure S3): In this section, users can select to manually or automatically control the instrument pump. In the automatic mode, the pump will automatically shut off when the flow rate falls below a user-defined threshold. If a primary flowmeter is installed, a threshold for both the primary chamber flow rate and the instrument’s chamber flow rate can be set. The flowmeter K-factors are scaling coefficients unique to each meter and provided by the manufacturer.
- d. **Iridium Module** (orange box in Figure S3): Optional – Toggle the switch in the Iridium section to the “off” position if not in use. If using the Iridium module, toggle to the “This Computer” or “Other Computer” options, and set the “Iridium Save Path” to indicate where a separate data file containing a subset of underway observations will be saved.
- Note that a second computer (“Other Computer” option), running the “Send_iridium_standalone.vi” or “Send_iridium_standalone.exe” LabVIEW program (Figure S7), may be required for the Iridium module satellite transmitter (part no. 57 in Table S1) to have a clear view of the sky.

- Alternatively, place the PIGI electronics box near to a window, or use a patch antenna to extend to a location with a clear view of the sky, and transmit the Iridium signal using the main LabVIEW program, autoPIGI_underway_2020.vi. If the PIGI computer is being used to transmit the Iridium signal (“This Computer” option), adjust the settings in the “Transmit data via this computer” box.

NOTE: The stand-alone executable LabVIEW program, autoPIGI_underway2020.exe, begins on startup. The software provided for the base, full, or professional development programs will only begin after pressing the arrow key at the top right of the LabVIEW window. Starting this program will not start the data acquisition; this must be completed after all of the settings in the Information and Notes, User Control, Pump Control, and Iridium module sections have been specified by the user. Once the settings have been updated, the user must click the blue START ACQUISITION button to begin collecting data. This button should not be clicked again unless restarting the acquisition manually.

- e. **Data and Plots** (Figure S4): This section displays real-time gas and ancillary data signals. Comments are saved to the data files in line with underway observations and recorded for post-processing. Startup or acquisition errors are displayed here. The ERRORS box will illuminate in pink when an error has occurred. Most errors will terminate the acquisition, but some (e.g., a failed Iridium transmission) will

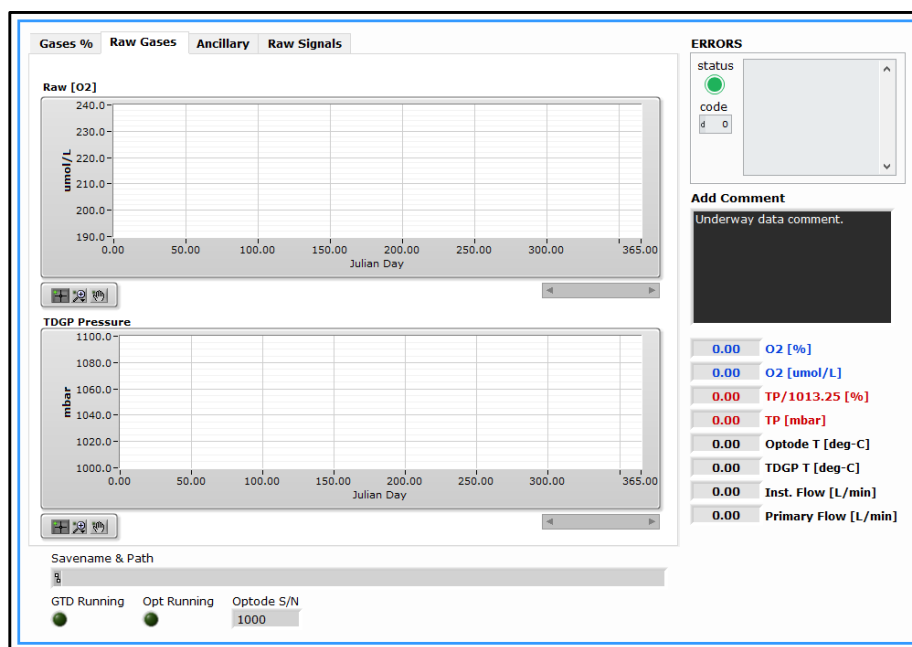


Figure S4. The data sections of the autoPIGI_underway_2020 LabVIEW program. Error messages are also shown in this section.



Figure S5. Using a precision screwdriver, the voltage on the 12 VDC and 24 VDC can be adjusted slightly (yellow circle). Turn clockwise to increase and counterclockwise to decrease.

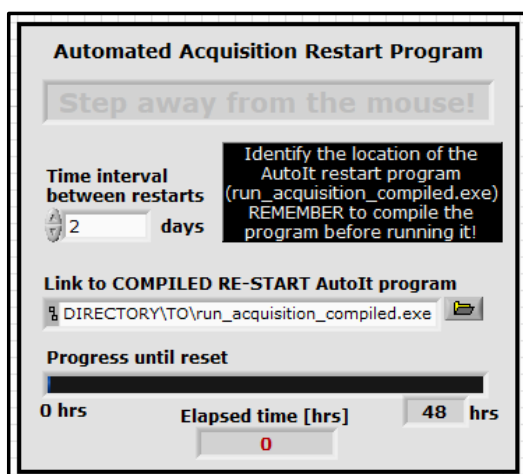


Figure S6. The automated acquisition restart section of autoPIGL_ underway_2020 LabVIEW program that controls the automatic file acquisition. The frequency at which the file acquisition restarts can be adjusted. The “Step away from the mouse” text illuminates when the restart program is running. During this time, it is important that users do not touch the mouse or keyboard.

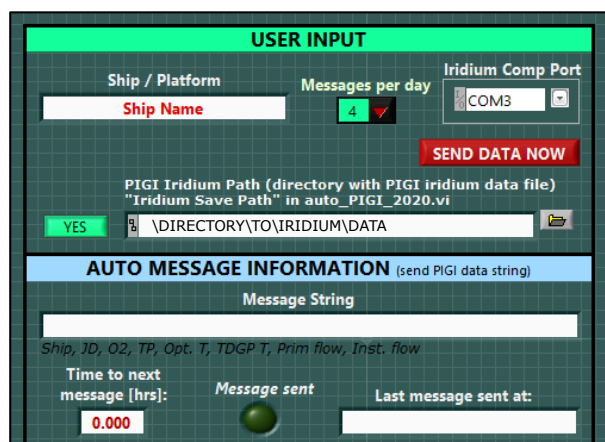


Figure S7. Screenshot of the stand-alone iridium module.

simply display a warning. The following data are displayed in separate tabs in this section:

- Gases %: Raw O₂ saturation state and normalized GTD Pressure (i.e., GTD pressure/1013.25 mbar) (%)
- Raw Gases: Raw GTD pressure (mbar) and raw O₂ concentration (μmol L⁻¹)
- Ancillary: Temperature from the optode and GTD (°C) and flow rates from the primary and instrument flowmeters (L min⁻¹)
 - Note that the GTD temperature will likely read higher than the optode as the GTD head is not submerged in water.
 - Note that the flow rate of the instrument pump can be adjusted by changing the output voltage from the 24 VDC power supply (Figure S5).
- Raw Signals: Raw data signals from the optode and GTD (consult the manufacturers’ manuals for details)

f. Automated Acquisition Restart Program (Figure S6): This section of the main LabVIEW program runs a periodic automated sequence (using AutoIt software; see below) that restarts data acquisition at a user-specified interval. The user must set the “Link to COMPILED RE-START AutoIt program” to match the location on the system being used.

g. When the user-defined “interval between restarts” is reached, the program will run an AutoIt script (run_acquisition_compiled.exe) that will control the mouse function to stop and then restart the PIGI acquisition.

Send_iridium_standalone.vi or Send_iridium_standalone.exe

A stand-alone LabVIEW program can be operated on a second computer if the primary PIGI computer does not have close access to a window or a clear view of the sky (Figure S7). If using the stand-alone program, open Send_iridium_standalone and identify the location of the Iridium data file that should be saved to the ship’s server. Adjust the Iridium transmission settings as desired. This program will periodically transmit a message to a land-based email server, and will display the success of transmissions.

S4.2 AutoIt

run_acquisition.au3

This script, when compiled, runs a sequence that controls the mouse and keyboard to restart the current PIGI acquisition. When the restart sequence is running, it is important that users do not touch the mouse/keyboard, as this will interfere with the AutoIt command sequence. If making changes to the script, it is very important to recompile the script: right click on run_acquisition.au3 and select compile, then rename the file to “run_acquisition_compiled.exe.” After updating the script, and recompiling, edit the “Link to COMPILED RE-START AutoIt Program” in the Automated Acquisition Restart Program section of the main LabVIEW program (Figure S6).

S4.3 MATLAB

NOTE: The MATLAB software provided here was written using MATLAB 2018. Newer versions of the software will run these scripts. A license is required to run the scripts to post-process the PIGI data (see Table S1). However, a description of the processing workflow is provided in Section S5, below, for operators who wish to develop alternative software.

A MATLAB package containing all necessary MATLAB functions and scripts to process output data from PIGI LabVIEW acquisitions can be obtained from https://github.com/rizett/PIGI_system. The main scripts are listed below:

process_pigi_MAIN.m

Run this main script to read, compile, and perform some post-processing on PIGI deployment data obtained using the LabVIEW software. Data figures and files are automatically saved to user-defined directories. An example data set, with output data and figures (Figure S8–10), is also provided.

- **NOTE:** Additional data processing (e.g., gas signal calibration and time-response corrections) should be incorporated into the provided routine.

- **NOTE:** Additional ancillary data sets (e.g., sea surface temperature and salinity, and sea level pressure) are required to run this script. Default values can be set in the absence of real observations.

pigi_processing.m

This sub-function reads and compiles all data from a single deployment.

optode_recalc.m

This sub-function recalculates optode O_2 concentrations, saturation state, and partial pressure using updated sea surface temperature and salinity fields. The function uses the optode-specific foil coefficients (obtained from the manufacturer during multipoint sensor calibration) to preform calculations.

n2_from_tp.m

This sub-function calculates N_2 concentration and saturation from GTD total dissolved gas pressure and optode O_2 measurements. $\Delta O_2/N_2$ is also calculated.

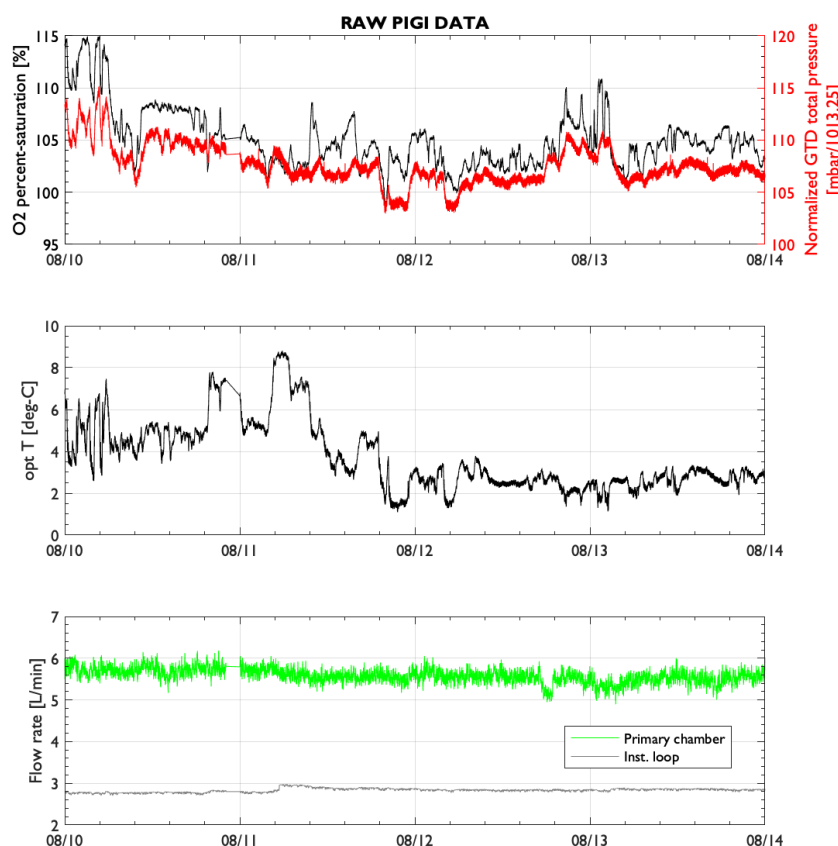


Figure S8. Example data output figures produced using the MATLAB processing scripts. Raw data from PIGI.

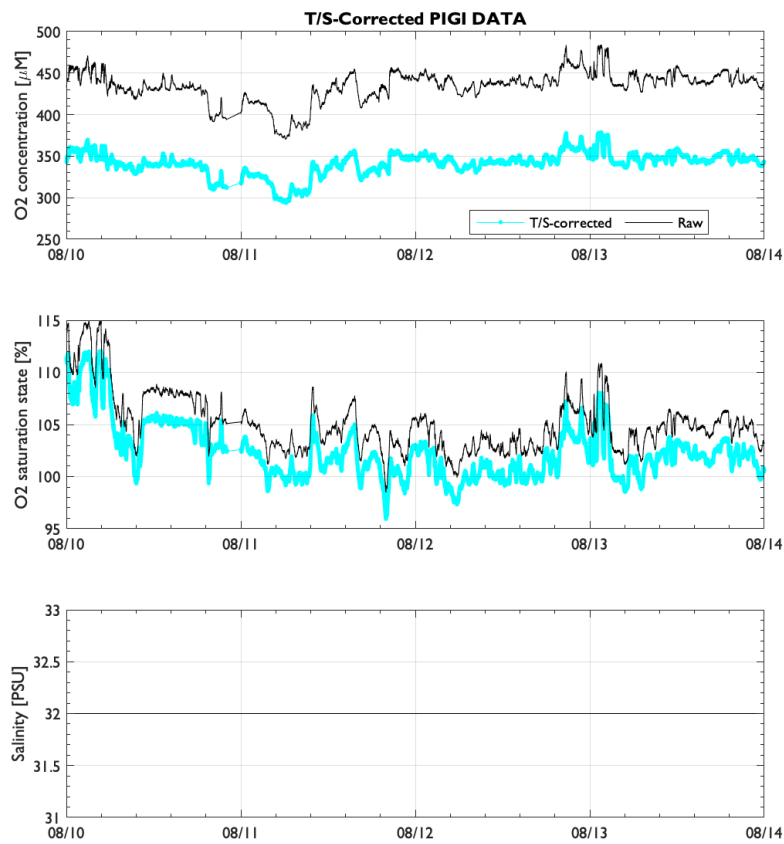


Figure S9. Example data output figures produced using the MATLAB processing scripts. O₂ temperature and salinity compensation.

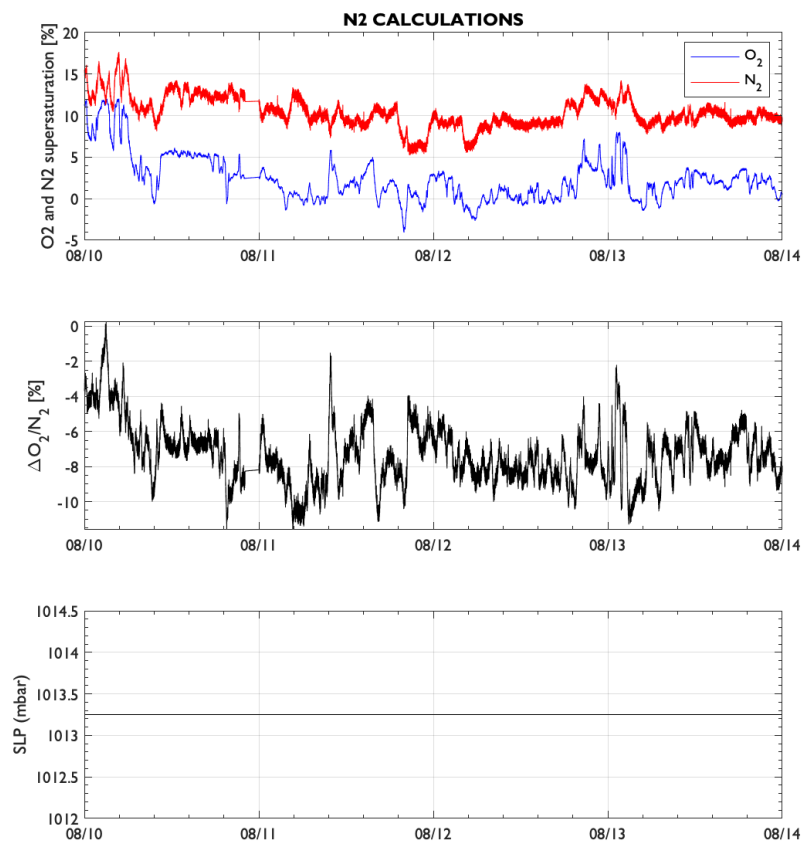


Figure S10. Example data output figures produced using the MATLAB processing scripts. Derived quantities.

S4.4 SolidWorks

Solidworks three-dimensional CAD diagrams are available at https://github.com/rizett/PIGI_system. A Solidworks license is required to access these files. In the absence of a license, technical drawings of all parts are provided in a separate file in the online supplementary materials (PIGI4.3_Technical-drawings.pdf), and [Diagrams 1–5](#) summarize the designs presented in the CAD drawings.

S5. ACQUISITION AND PROCESSING SOFTWARE WORKFLOW

As licenses are required to edit LabVIEW programs and run MATLAB scripts (descriptions of these files in [Section S4](#)), we provide a workflow of key steps for operators who wish to develop their own acquisition and processing programs using open-source software. The information presented below is based on concepts of the system discussed in the main text and can be used as a template for developing future software versions.

S5.1 Acquisition

The following workflow diagram ([Diagram 15](#)) for data logging and acquisition should be followed for optimal quality and post-processing efficiency. These principles are applied in the software descriptions above ([Section S4](#)).

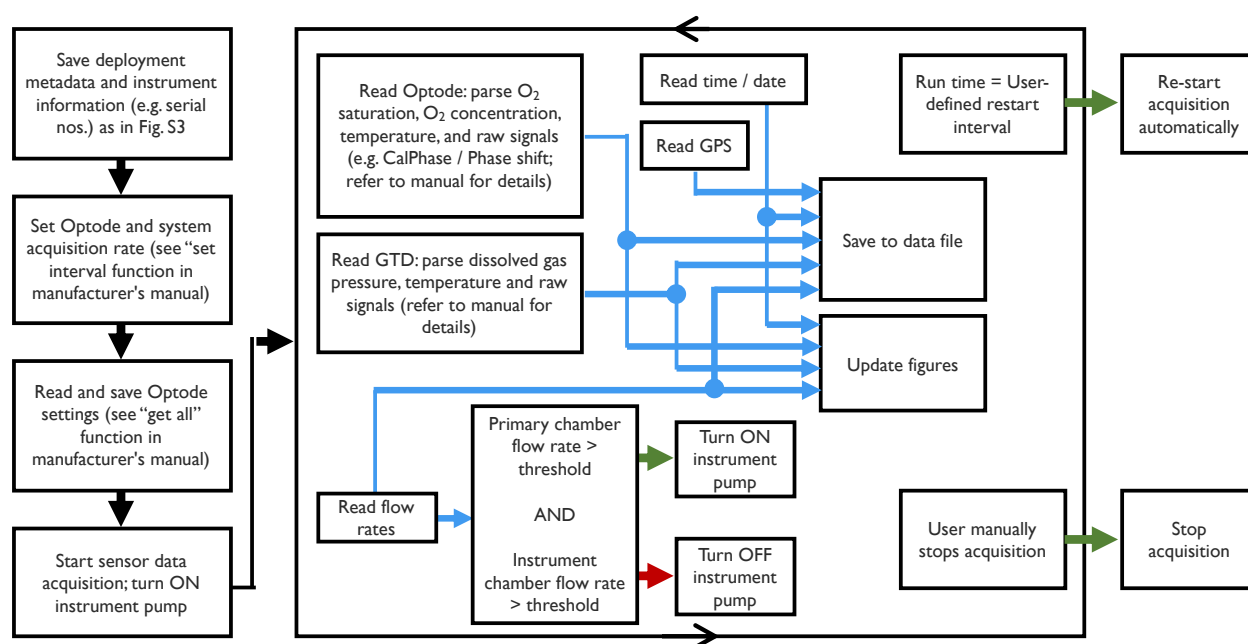


Diagram 15. Workflow diagram for automated PIGI data acquisition. Thick black arrows represent a progression of sequence; thin reversing black arrows represent a repeated sequence; blue arrows imply data flow; green and red arrows represent true and false conditions, respectively. Note that the optode ancillary signals (e.g., CalPhase) and instrument settings are required for most-accurate data post-processing. Refer to [Section S4.1](#) and [Figures S3](#) and [S4](#) for examples of these processes in our LabVIEW program.

S5.2 Data Post-Processing

The following workflow should be followed for post-processing and applying quality control measures to the PIGI data. These principles are applied in the software descriptions in [Section S4](#).

1. Read and compile the PIGI data, including gas and ancillary measurements (flow rates, temperature, and raw optode/GTD signals).
2. Perform preliminary quality control checks:
 - a. Identify data obtained when the instrument pump was off.
 - b. Identify data obtained when the flow rate through the instrument system was below $\sim 0.5 \text{ L min}^{-1}$. Flow rates below this threshold result in a long residence time in the instrument loop (>30 seconds), which could impact data quality in highly variable regions.
 - c. Check for data excursions, and remove data outside of realistic ranges, which may vary by deployment region.
3. Perform time-response corrections on gas and ancillary signals. The processing steps below should be performed on aligned raw signals, including the raw instrument outputs and ancillary measurements of temperature and/or salinity.
4. Recalculate optode O_2 saturation state and concentrations.
 - a. Use underway salinity data to perform salinity compensation on the raw optode concentration. If underway temperature data were obtained from a TSG installed near the PIGI system, use these data to recalculate the O_2 concentration following Uchida et al. (2008) and be sure the performance of the sensors was evaluated. The response of the sensing foil of the optode decreases with increasing ambient pressure, and this pressure effect was found to decrease the response by 3.2% (1,000 dbar, as TSG temperature sensors are faster and more accurate than the temperature sensor on the optode). Use the optode raw CalPhase (phase shift) measurements and the foil coefficients recorded to the optode settings file saved at the start of the underway acquisition.
 - b. Recalculate O_2 saturation state using the salinity and most accurate temperature data and sea level pressure data. They can be acquired from reanalysis products (e.g., NCEP/NCAR) or shipboard observations.
5. Adjust the TDGP total dissolved gas pressure data for bias.
 - a. Determine the offset between atmospheric pressure and TDGP measurements made in air-equilibrated water or as in-air measurements. This should be characterized at the start and end of each deployment.
6. Adjust the TDGP total dissolved gas pressure for warming between the seawater intake and the laboratory.
 - a. Seawater warming between the intake and the point of measurement will induce gas supersaturation. This can be approximated from the solubility equations of the major gases (O_2 , N_2 , Ar), as the ratio of the equilibrium concentration at the water temperature recorded at the seawater intake and the equilibrium concentration at the water temperature recorded by the optode/near the point of measurement. The outside (true) sea surface temperature and degree of warming can be approximated from CTD casts or from an underway thermosalinograph installed near to the seawater intake. The correction should be small but will depend on the degree of warming.
7. Calibrate the optode using discrete samples analyzed by Winkler titration or by periodic in-air measurements.
8. Calculate N_2 concentration, saturation (following McNeil et al., 2005), and $\Delta\text{O}_2/\text{N}_2$ from calibrated O_2 and N_2 saturation data, and ancillary temperature and salinity measurements.
9. Manually remove data spikes and excursions.

REFERENCES

- McNeil, C., D. Katz, R. Wanninkhof, and B. Johnson. 2005. Continuous shipboard sampling of gas tension, oxygen and nitrogen. *Deep Sea Research Part I* 52(9):1,767–1,785, <https://doi.org/10.1016/j.dsr.2005.04.003>.
- Uchida, H., T. Kawano, I. Kaneko, and M. Fukasawa. 2008. In situ calibration of optode-based oxygen sensors. *Journal of Atmospheric and Oceanic Technology* 25(12):2,271–2,281, <https://doi.org/10.1175/2008JTECHO549.1>.