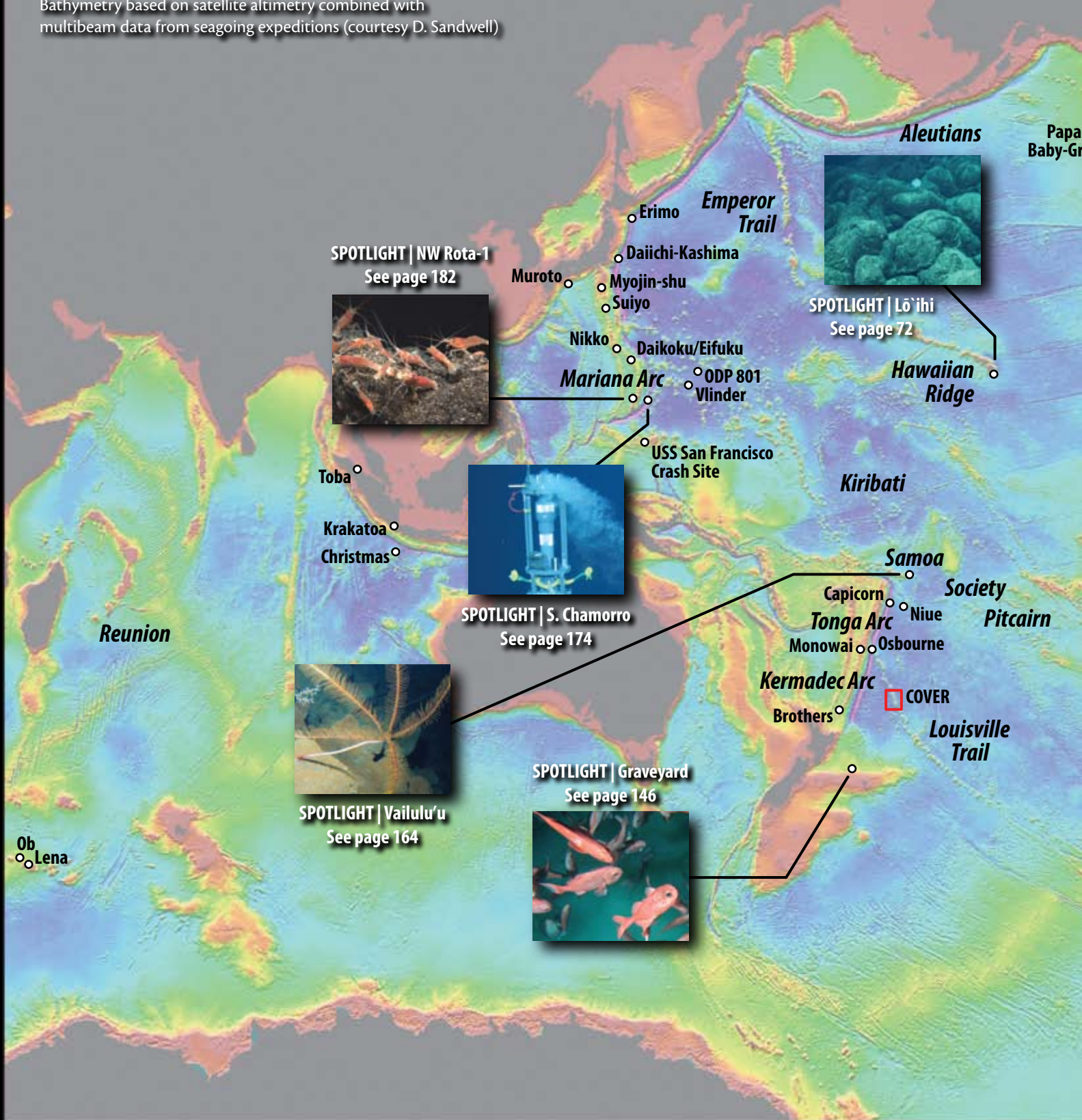


BOX 2 | Featured Seamount Locations

Bathymetry based on satellite altimetry combined with multibeam data from seagoing expeditions (courtesy D. Sandwell)



SPOTLIGHT | Axial
See page 38



SPOTLIGHT | Sedlo
See page 202



SPOTLIGHT | Castro
See page 200



Bowie
Mama
Lizzly Bare
Cobb
Vance



SPOTLIGHT | Davidson
See page 126

Georges Bank
Balanus
Kelvin
Manning
Corner
Yakutat
Nashville
Bermuda
DSDP 417-418
DSDP 396
Azores
Condor
Josephine
Madeira
Seine
Graham
Santa Maria di Leuca
Santorini
Troodos
Eratosthenes

Fieberling

Tengosed
Dorado
Fisher

Galápagos



SPOTLIGHT | New England
See page 104

Cape Verde

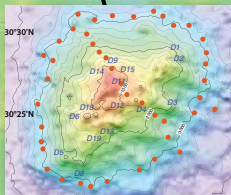
Marquesas

Puka Puka

Easter

Sala y Gomez Ridge

Namibian
Walvis Ridge
Vema



SPOTLIGHT | Jasper
See page 40



SPOTLIGHT | Great Meteor
See page 106

Bathymetric data used are v6.0 of the SRTM30_plus data set, which is equivalent to v12.0 of the Mercator format global topography map. The SRTM30_Plus is pole-to-pole, originally on a 1/2 minute grid and in lat-lon format. Available from http://topex.ucsd.edu/WWW_html/srtm30_plus.html.